




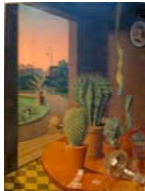


NEUE SACHLICHKEIT: "New Objectivity" in Weimar Germany

September 21 – December 18, 2004

1.  **Carl Grossberg**
Muntplein
1925–1926
Oil on canvas
23 5/8 x 27 1/2 inches (60 x 70 cm)
Signed and dated on recto
(CGRO 4)
2.  **Herbert Ploberger**
Stilleben auf dem Tisch, unter dem Tisch ["Still Life on the Table, under the Table"]
1925
Oil on canvas
35 x 45 5/8 inches (89 x 116 cm)
Signed and dated on recto / Painting on verso
(PLOB 1)
3.  **Heinrich Maria Davringhausen**
Der Akrobat ["The Acrobat"]
ca. 1920
Oil on canvas
70 1/4 x 39 1/8 inches (178 x 99 cm)
(DAVR 1)
4.  **Max Radler**
Station sd/2
1933
Oil on panel
25 5/8 x 33 1/2 inches (65 x 85 cm)
Signed and dated on recto / Signed, titled and dated on verso
(RADL 1)
5.  **Kurt Weinhold**
Mann mit Radio (Homo sapiens) ["Man with Radio (Homo sapiens)"]
1929
Oil on canvas
47 5/8 x 35 3/8 inches (121 x 90 cm)
Signed and dated on recto / Signed, titled and dated on verso
(WEIN 2)
6.  **Georg Scholz**
Kakteenstilleben II ["Still Life with Cactus II"]
1924
Oil on panel
24 3/8 x 18 1/8 inches (62 x 46 cm)
Signed and dated on recto
(SCHO 3)

7.



George Grosz

Brindisi

1921

Watercolor, pen and ink on paper

17 x 11 7/8 inches (43 x 30 cm)

Signed on recto

(GROS 4)

8.



Hanns Kralik

Aus meinem Fenster ["From my Window"]

1930

Oil on canvas

26 1/2 x 21 7/8 inches (67 x 55 cm)

Initialed on recto / Painting on verso

(KRAL 1)

9.



Christian Schad

Baroness Vera Wassilko

1926

Oil on canvas

28 5/8 x 18 1/4 inches (72 x 46 cm)

Signed and dated on recto

(SCHA 2)

10.



Rudolf Dischinger

Hinterhaus-Balkon ["Backyard Balcony"]

1935

Oil on canvas

22 7/8 x 19 7/8 inches (58 x 50 cm)

Signed and dated on recto / Signed, titled and dated on verso

(DISC 1)

11.



Otto Dix

Mädchen ["Girl"]

1923

Watercolor on paper

20 3/4 x 15 inches (55 x 38 cm)

Signed on recto

(DIX 2)

12.



Christian Schad

Freundinnen ["Friends"]

1930

Oil on canvas

12 3/8 x 9 1/8 inches (31 x 23 cm)

Signed and dated on recto

(SCHA 1)

13.



Yva (Elsa Neuländer-Simon)

Schwestern ["Sisters"]

ca. 1930

Vintage gelatin silver print

8 3/8 x 6 1/4 inches (21 x 16 cm)

(YVA 1)

14.



Max Beckmann

Der Traum ["The Dream"]

1920

Pen, brown ink and red chalk on paper
11 x 6 5/8 inches (28 x 17 cm)
Signed, dated and annotated on recto
(MBEC 2)

15.



Anton Räderscheidt

Paul Multhaupt

1928

Oil on panel
47 1/4 x 31 1/2 inches (120 x 80 cm)
Initialed and dated on recto
(RADE 1)

16.



Albert Renger-Patzsch

Das Bäumchen ["Small Tree"]

1928

Vintage gelatin silver print
15 1/8 x 11 inches (38 x 28 cm)
(RENG 4)

17.



Karl Blossfeldt

Symphytum Officinale

1915–1925

Vintage gelatin silver print
9 3/8 x 11 3/4 inches (24 x 30 cm)
Stamped and titled by the Blossfeldt Archive / Annotated by artist on verso
(BLOS 3)

18.



Max Unold

Mittagsrast ["Rest at Noon"]

1927

Oil on canvas
19 5/8 x 23 5/8 inches (50 x 60 cm)
Signed on recto
(UNOL 1)

19.



Franz Radziwill

Landschaft mit Kanal ["Landscape with Canal"]

1924

Oil on canvas mounted on panel
31 5/8 x 33 5/8 inches (80 x 85 cm)
Signed and dated on recto
(RADZ 1)

20.



Heinrich Hoerle

Zeichnung (Frau) ["Drawing (Woman)"]

1920

Airbrush on board
26 1/8 x 11 7/8 inches (66 x 30 cm)
Stamped, titled and dated on verso
(HOER 2)

21.



Heinrich Hoerle

Zwei Männerköpfe, Vorstadt (Kleinbauern) ["Two Male Heads, Suburb (Peasants)"]
1932

Wax on cardboard on panel
13 3/4 x 18 7/8 inches (35 x 48 cm)
Initialed and dated on recto
(HOER 3)

22.



Ernest Neuschul

Kinderbildnis ["Portrait of Children"]
1927

Oil on canvas
31 1/2 x 29 3/8 inches (80 x 74 cm)
Signed on recto
(ENEU 1)

23.



Erich Wegner

Arbeit an Bord ["Labor on Board"]
1920s

Gouache on paper
13 1/4 x 9 3/8 inches (34 x 24 cm)
Signed on recto
(WEGN 1)

24.



Erich Wegner

Seemannskneipe ["Sailors' Dive"]
1926

Watercolor on paper
16 1/8 x 14 1/4 inches (41 x 36 cm)
Signed on recto
(WEGN 2)

25.



George Grosz

Zeitideen ["Ideas of the Time"]
1929

Oil on canvas mounted on panel
31 5/8 x 23 1/2 inches (80 x 60 cm)
(GROS 1)

26.

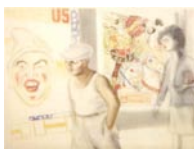


Otto Möller

Bauarbeiter ["Construction Workers"]
1932

Oil on canvas
19 5/8 x 23 5/8 inches (50 x 60 cm)
Signed on recto
(MOLL 1)

27.



Karl Hubbuch

Selbstbildnis in St. Malo ["Self Portrait in St. Malo"]
ca. 1930

Watercolor and collage on paper
22 5/8 x 26 3/4 inches (57 x 68 cm)
Signed on recto
(HUBB 1)

28.



Karl Hubbuch

Krach am Marmortisch ["Quarrel at the Marble Table"]
ca. 1927
Watercolor, pencil, conté crayon and gouache on paper
18 7/8 x 24 3/4 inches (48 x 63 cm)
Signed on recto / Titled on verso
(HUBB 2)

29.



Karl Holtz

Die Pfändung ["Seizure"]
ca. 1923
Gouache on paper
16 1/4 x 12 3/8 inches (41 x 31 cm)
Stamped on verso
(HOLT 2)

30.



Karl Holtz

Untitled
1920–1925
Gouache on card
8 1/2 x 11 1/8 inches (22 x 28 cm)
(HOLT 56)

31.



Ernst Fritsch

Erinnerung an Eldorado ["Memories of Eldorado"]
1929–1932
Oil on canvas
35 7/8 x 25 5/8 inches (91 x 65 cm)
Triptych (No. 1 of three, left side)
Signed and dated on recto
(FRIT 2)

32.



Ernst Fritsch

Erinnerung an Eldorado ["Memories of Eldorado"]
1929–1932
Oil on canvas
35 7/8 x 25 5/8 inches (91 x 65 cm)
Triptych (No. 2 of three, middle)
(FRIT 3)

33.



Ernst Fritsch








Erinnerung an Eldorado ["Memories of Eldorado"]
1929–1932
Oil on canvas
35 7/8 x 25 5/8 inches (91 x 65 cm)
Triptych (No. 3 of three, right side)
(FRIT 4)

34.



Carl Grossberg

Bahnhofplatz in Köln am Rhein ["Cologne Station"]
1927
Oil on panel
23 1/2 x 27 1/2 inches (60 x 70 cm)
Signed and dated on recto / Painted checkerboard on verso
(CGRO 1)

35.  **Carl Grossberg**
Jacquared-Webereien ["Textile Plant"]
1934
Oil on panel
19 5/8 x 15 3/4 inches (50 x 40 cm)
Signed and dated on recto / Initialed and dated on recto
(CGRO 6)
36.  **Carl Grossberg**
Maschinenhalle ["Machine Hall"]
1924
Pencil on paper
15 7/8 x 19 1/4 inches (40 x 49 cm)
Signed and dated on recto
(CGRO 2)
37.  **Carl Grossberg**
Creglingen
1926
Oil on panel
25 5/8 x 20 7/8 inches (65 x 53 cm)
Signed and dated on recto
(CGRO 3)
38.  **Carl Grossberg**
Fränkisches Dorf ["Frankish Village"]
1926
Oil on panel
15 3/8 x 21 1/4 inches (39 x 54 cm)
Signed and dated on recto
(CGRO 5)
39.  **Herbert Ploberger**
Stilleben mit Flasche ["Still Life with Bottle"]
1928
Oil on canvas
16 7/8 x 20 7/8 inches (43 x 53 cm)
Signed and dated on recto
(PLOB 2)
40.  **August Sander**
Archbishop Alfredo Ildefonsus Schuster
1927
Vintage gelatin silver print
6 x 3 3/4 inches (15 x 10 cm)
Signed on mount / Blind stamp on photograph
(SAND 1)
41.  **Albert Renger-Patzsch**
Viaduct
1928 (printed 1950s)
Gelatin silver print
8 5/8 x 6 3/8 inches (22 x 16 cm)
Artist's stamp on verso
(RENG 5)

42.



Karl Blossfeldt

Equisetum Hiernale

1915–1925

Vintage gelatin silver print

11 3/4 x 4 3/4 inches (30 x 12 cm)

Stamped and titled by the Blossfeldt Archive / Annotated by artist on verso
(BLOS 2)

43.



Karl Blossfeldt

Phellodendron Japonicum

1915–1925

Vintage gelatin silver print

11 3/4 x 4 3/4 inches (30 x 12 cm)

Stamped and titled by the Blossfeldt Archive / Annotated by artist on verso
(BLOS 1)

44.



Nicolai Wassilieff

Innere ["Interior"]

1923

Oil on canvas

16 1/8 x 12 inches (41 x 31 cm)

Signed on recto / Painting, signature, annotation and date on verso
(WASS 1)

45.



Gottfried Brockmann

Krüppeldasein I ["A Cripple's Existence I"]

1922

Oil on panel

7 3/8 x 8 3/4 inches (19 x 22 cm)

Initialed on recto

(BROC 1)

46.



Eddy Smith

Biedermann Zeitgenosse ["Modern-day Bourgeois"]

(from *Die schwarze Mappe*, 10 etchings in original portfolio)

1924

Etching

18 1/2 x 16 inches (47 x 41 cm) sheet size

Signed on recto

(SMIT 2)

47.



Eddy Smith

Der Erfinder ["The Inventor"]

(from *Die schwarze Mappe*, 10 etchings in original portfolio)

1924

Etching

18 1/2 x 16 inches (47 x 40 cm) sheet size

Signed on recto

(SMIT 2)

48.



Georg Scholz

Zeitungsträger (*Arbeit schändet*) ["Paperboy (Work Is Disgracing)"]

1921

Lithograph

12 1/8 x 15 3/4 inches (31 x 40 cm) sheet size

Signed on recto

(SCHO 2)

49.



Georg Scholz

Industriebauern ["Industrial Peasants"]

1920

Lithograph

15 7/8 x 18 1/2 inches (40 x 47 cm) sheet size

Signed, titled and dated on recto

(SCHO 4)

50.



Heinrich Hoerle

From *Krüppelmappe* ["The Cripples' Portfolio"]

1920

One of 12 lithographs in original portfolio

23 1/8 x 18 inches (59 x 46 cm) sheet size

Signed on recto

(HOER 1)

51.



Heinrich Hoerle

From *Krüppelmappe* ["The Cripples' Portfolio"]

1920

One of 12 lithographs in original portfolio

23 1/8 x 18 inches (59 x 46 cm) sheet size

Signed on recto

(HOER 1)

52.



Bruno Voigt

Untitled

1932

Watercolor and feather on paper

23 1/4 x 16 3/8 inches (59 x 42 cm)

Initialed and dated on recto

(VOIG 2)

53.



Bruno Voigt

Der Totentanz beginnt ["The Death Dance Begins"]

1933

Watercolor, pencil and ink on paper

23 1/4 x 16 3/8 inches (59 x 42 cm)

Signed, titled and dated on recto

(VOIG 3)

54.



Rudolf Schlichter

Dachluke ["Escape Hatch"]

1920s

Ink on paper

21 3/8 x 18 1/4 inches (54 x 46 cm)

(SCHL 2)

55.



Rudolf Schlichter

Damenkneipe ["Ladies' Dive"]

ca. 1923

Watercolor and pencil on paper

23 1/4 x 19 3/4 inches (59 x 50 cm)

Signed on recto

(SCHL 67)

56.



George Grosz

Entdeckung in der Vorstadt (Verwesung) ["The Discovery in the Suburb (Decay)"]

1916-17

Watercolor and ink on paper

22 x 18 inches (56 x 46 cm)

Signed on recto

(GROS 44)

57.



Grethe Jürgens

Bei Heinrich II ["At Heinrich's II"]

1922

11 1/8 x 9 3/8 inches (28 x 24 cm)

India ink and color pen on paper

Signed and dated twice on recto

(JURG 1)

58.



Gerta Overbeck-Schenk

Vor einem Donnersturm ["Before a Thunderstorm"]

1922

Gouache on paper

13 1/8 x 9 1/8 inches (33 x 23 cm)

Signed and dated on recto

(OVER 1)

59.



Karl Völker

Fabrik ["Factory"]

1924

Watercolor and pencil on paper

16 1/8 x 21 1/4 inches (41 x 54 cm)

Signed and dated on recto

(VOLK 2)

60.



Anton Räderscheidt

Feiertag ["Holiday"]

1927

Tempera on paper

24 5/8 x 18 1/4 inches (62 x 46 cm)

Initialed and dated on recto

(RADE 2)

61.



August Heitmüller

Professor Fr. Wilhelm Jochem

1920s

Oil on panel

43 3/8 x 33 1/4 inches (110 x 84 cm)

(HEIT 1)

62.



Ernst Fritsch

Mädchenbildnis ["Portrait of a Young Woman"]

1923

Oil on canvas

28 7/8 x 22 5/8 inches (73 x 57 cm)

Signed and dated on recto / Signed, annotated and titled on verso

(FRIT 1)

63.



Kaete Hoch

Stilleben mit Stiefeln ["Still Life with Boots"]

1927

Oil on canvas

22 x 17 1/2 inches (56 x 44 cm)

Signed and dated on recto

(KHOC 1)

64.



Albert Henrich

Stilleben mit Hut und Kragen ["Still Life with Hat and Collar"]

1925

Oil on canvas

16 x 19 7/8 inches (41 x 50 cm)

Signed and dated on recto

(AHEN 1)

65.



Kurt Weinhold

Frau mit Taube — Verkündigung ["Woman with Dove — Annunciation"]

1927

Oil on canvas

47 1/4 x 39 3/8 inches (120 x 100 cm)

Signed and dated on recto / Signed, titled and dated on verso

(WEIN 1)

66.



Karl Völker

Maskenstilleben ["Still Life with Mask"]

1931

Oil on canvas

44 3/4 x 30 1/2 inches (113 x 77 cm)

(VOLK 5)

67.



Albert Renger-Patzsch

Industrielle Landschaft ["Industrial Landscape"]

ca. 1929

Vintage gelatin silver print

6 3/8 x 8 3/4 inches (16 x 22 cm)

Artist's stamp on verso

(RENG 7)

68.



Albert Renger-Patzsch

Mammillaria Valida

1920s

Vintage gelatin silver print

6 1/2 x 7 1/2 inches (16 x 19 cm)

Artist's stamp on verso

(RENG 8)

69.



Franz Roh

Untitled

1920s

Vintage gelatin silver print

6 x 8 1/2 inches (15 x 22 cm)

Estate stamp on verso

(ROH 15)

70.



Hans Bellmer

Untitled

1934

Pencil on paper

7 1/4 x 5 inches (18 x 13 cm)

Signed, initialed, dedicated and dated on recto
(BELL 84)

71.



Hans Bellmer

Untitled

ca. 1932

Pencil and gouache on colored paper

12 7/8 x 9 7/8 inches (33 x 25 cm)

(BELL 83)

72.



Karl Völker

Hunger

1924

Lithograph

15 x 11 3/8 inches (38 x 29 cm)

Signed on recto

(VOLK 4)

73.



Hans Schmitz

Masse

1920s

Woodcut on paper

11 1/8 x 8 3/4 inches (28 x 22 cm) sheet size

Signed on recto

(HSCH 1)

74.



Augustin Tschinkel

Alltag ["Everyday Life"]

1930

Woodcut on paper

11 x 8 5/8 inches (28 x 22 cm) sheets size

Signed, titled and dated on recto

(ATSC 1)

75.



Georg Scholz

Apotheose des Kriegervereins ["Glorification of the Veterans' Association"]

1921

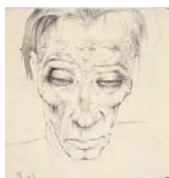
Lithograph

22 5/8 x 17 1/8 inches (57 x 43 cm) sheet size

Signed, annotated, dedicated to Otto Dix and dated on recto

(SCHO 1)

76.



Eddy Smith

Kopf ["Head"]

1923

Pencil on paper

4 3/4 x 3 3/4 inches (12 x 9 cm)

Initialed and dated on recto

(SMIT 3)

77.



Eddy Smith

Der Mörder mit der Taube ["Killer with Dove"]
(preparatory drawing for *Die schwarze Mappe*)
1923
Pencil on paper
6 7/8 x 5 7/8 inches (17.5 x 14.9 cm)
Initialed, titled and dated on recto
(SMIT 1)

78.



Max Beckmann

Der Grosse Mann ["The Tall Man"]
(from *Jahrmarkt*, a series of ten etchings)
1921
Drypoint on vellum with additions in pen and ink
12 x 8 1/8 inches (30.5 x 20.6 cm) image size
Signed, annotated and dated on recto
(MBEC 1)

79.



Franz Seiwert

Proletariers ["Proletarians"]
ca. 1922
Linocut on paper
5 7/8 x 4 3/8 inches (15 x 11 cm)
Initialed on recto
(SEIW 2)

80.



Franz Seiwert

BO (Betriebs-Organisation) ["Industrial Organization"]
1922
Linocut on paper
6 5/8 x 4 5/8 inches (16.8 x 11.9 cm)
Initialed and numbered on recto
(SEIW 1)

ADDITIONAL WORKS:

81.



Franz Lenk

Stilleben mit Kartoffeln, Tasse, Zwiebel ["Still Life with Potatoes, Cup, Onion"]
1927
Tempera and oil on panel
9 1/2 x 11 3/8 inches (24 x 29 cm)
Signed and dated on recto
(LENK 1)

82.



August Sander

Käthe von Nagy (Film Actress)
1935
Vintage gelatin silver print affixed to original mount
9 1/8 x 6 7/8 inches (23 x 17 cm)
(SAND 2)