

Aspects of Russian Art 1915–1935

Selections from the
Merrill C. Berman Collection

May 3 – July 22, 2005

Natan Al'tman, Iakov Chernikhov,
Aleksandr Deineka, Aleksandr
Dortman, Vassily Elkin, Vassily
Ermilov, Gustav Klutskis, Valentina
Kulagina, Vladimir Lebedev, Elena
Melnikova, Grigorii Miller, Yurii
Pimenov, Lyubov' Popova, Mikhail
Razulevich, Aleksandr Rodchenko,
Elena Semenova, Maria Siniakova,
Nikolai Sidelnikov, Georgii & Vladimir
Stenberg, Solomon Telingater,
Konstantin Vialov, Elena Zernova,
Georgii Zimin and others

Ubu Gallery presents Aspects of Russian Art, 1915–1935: Selections from the Merrill C. Berman Collection

—an exhibition drawn from one of the foremost collections of Russian avant-garde art. On view will be Futurist, Realist and Constructivist works that explore the remarkable range of artistic expression during the early part of the 20th Century in Russia.

From the years leading up to the Bolshevik revolution of 1917 and continuing to the end of Stalin's second Five Year Plan in 1934 (in which Stalin decreed that only Socialist Realism would be permitted in the arts), artists and designers experimented with new forms of representation and object making, rejecting stodgy academic practices and the elitism of imperial government. Harnessing the power of technology, industrialization and political revolution, they were intent upon bringing about an advanced modern society—one acting in the interests of all of its members. In art, architecture, product and graphic design, new tools of visual communication were forged



to define Soviet society and the artist's role within it. Despite many differing approaches, the artists and designers of the founding decades of the Soviet State were linked in their commitment to communicate with the whole of society in new ways that emphasized clarity, order and accessibility.

Merrill C. Berman is best known as a collector of graphic design—both the final printed works and the maquettes used in their creation—and while his collection covers many facets of early 20th Century art, it is particularly rich in Russian art and graphics. Berman has been the source of numerous museum exhibitions built solely or principally on his Russian avant-garde collection. An impressive selection of representative works from Berman's overall collection, including Russian art and design, is the subject of a touring exhibition, "Avant-Garde Graphics, 1918–1934," which is currently at the Estorick Collection in London and will travel to Kettle's Yard in Cambridge.

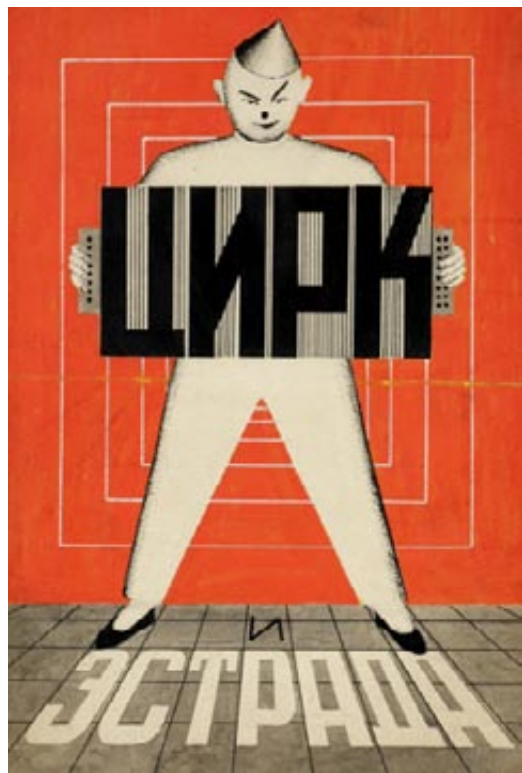


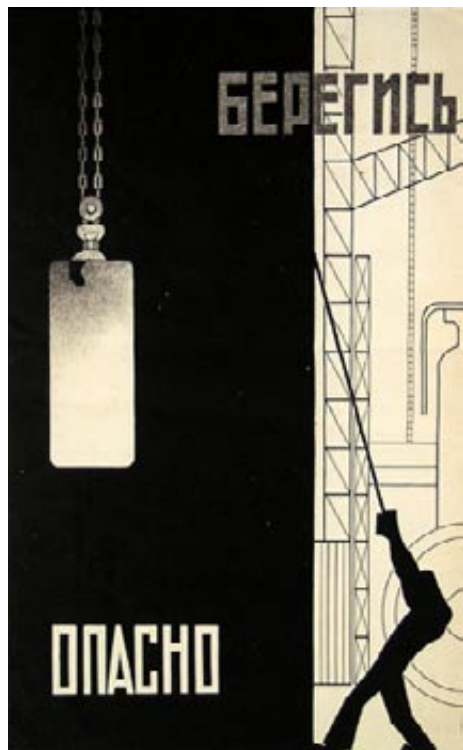














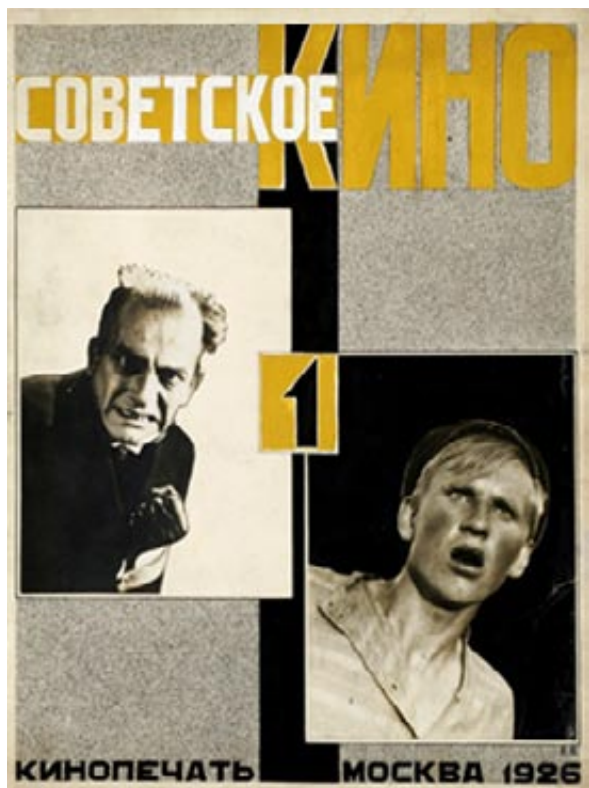










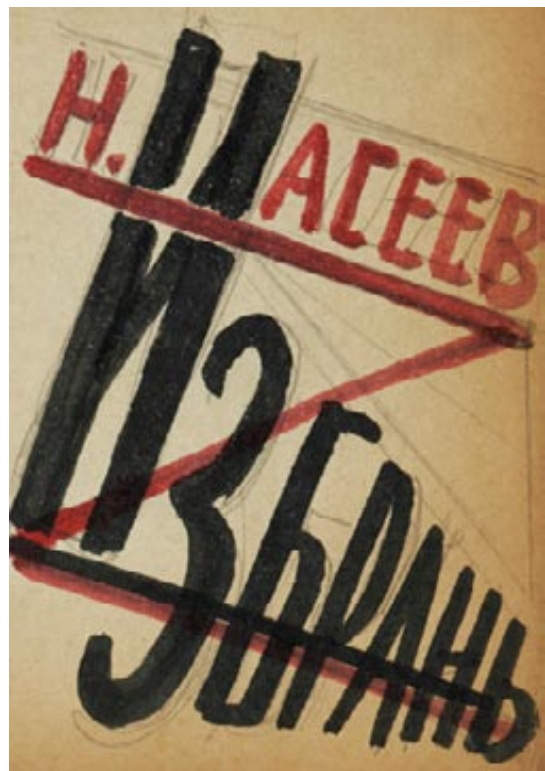
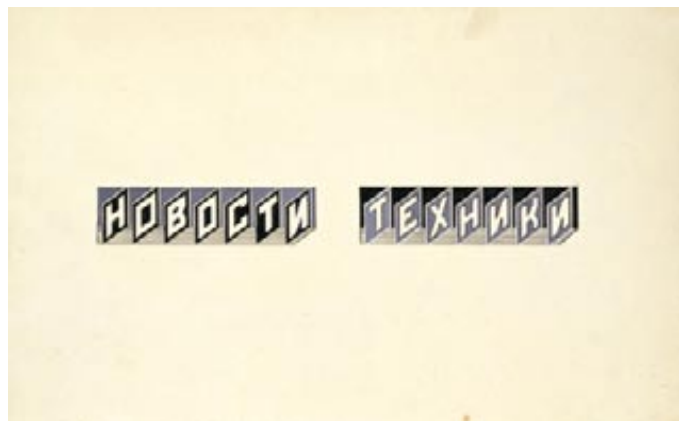








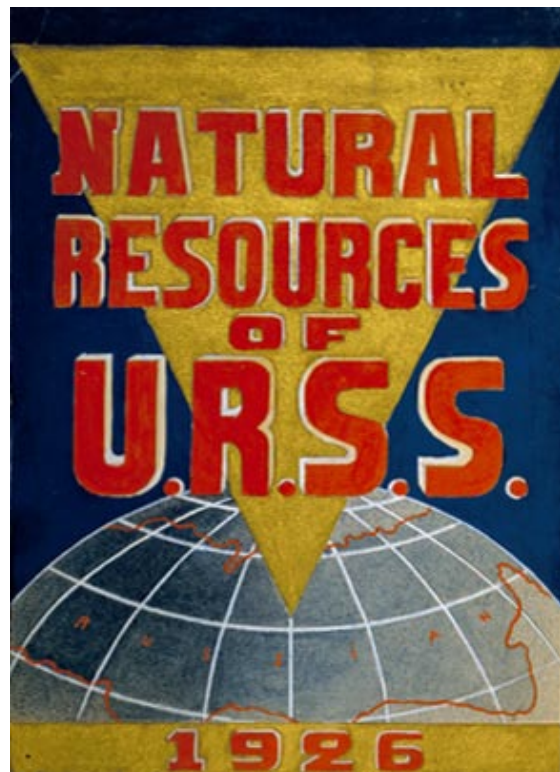
































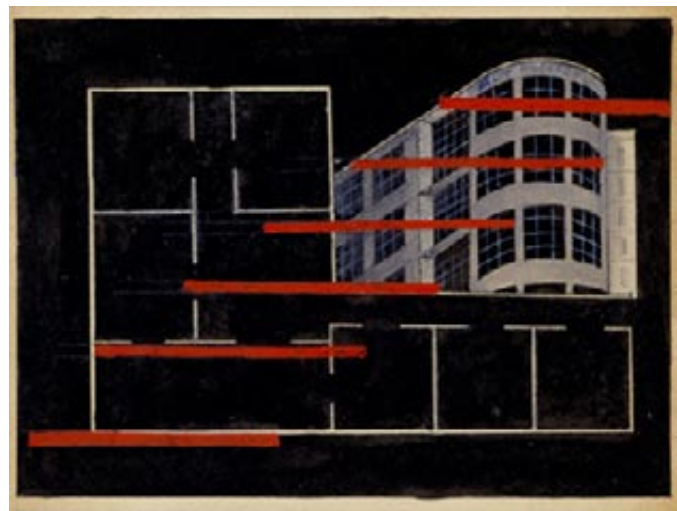




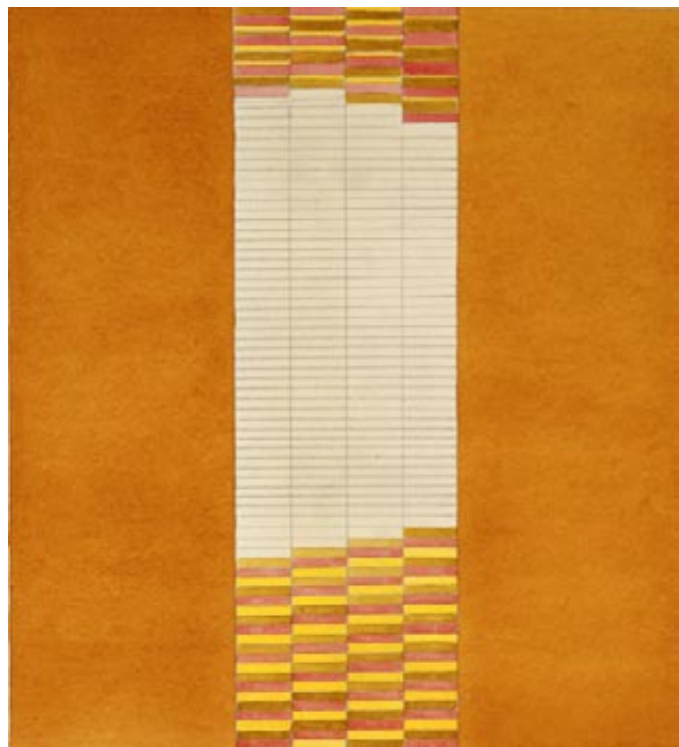
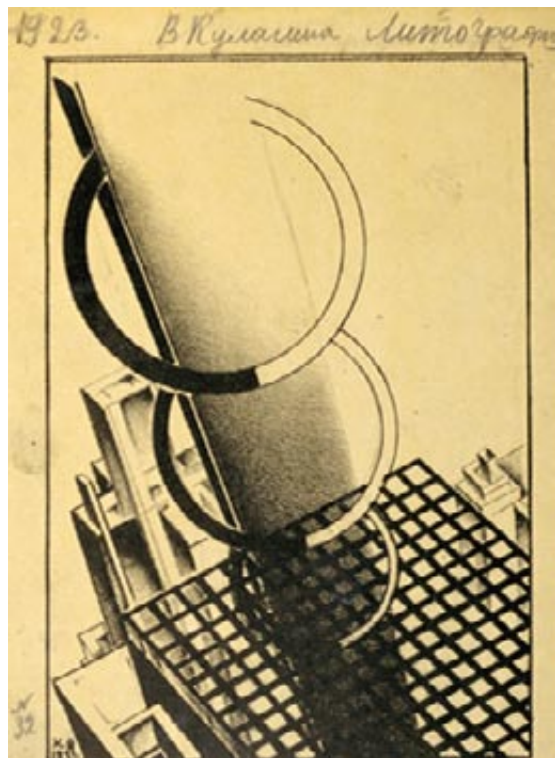














77



78



- 1. Anonymous**
Maquette for *World of Art*, 1916
17 $\frac{1}{8}$ × 12 $\frac{3}{8}$ inches (43.5 × 32.1 cm)
- 2. Iakov Chernikov**
Maquette for "Construction of Architecture and Machine Moldings,"
ca. 1925–1930
9 $\frac{7}{8}$ × 11 $\frac{1}{8}$ inches (25.1 × 30.2 cm)
- 3. Anonymous**
41" Newspaper, 1919
22 $\frac{7}{8}$ × 33 $\frac{1}{2}$ inches (58.1 × 84.7 cm)
- 4. Anonymous**
Donkey's Tail Poster, 1912
13 $\frac{5}{8}$ × 40 $\frac{1}{2}$ inches (34.6 × 102.9 cm)
- 5. Lyubov' Popova**
Preparatory Drawing for *The Magnanimous Cuckold*, 1920–1921
6 $\frac{5}{8}$ × 6 $\frac{5}{8}$ inches (16.8 × 16.8 cm)
- 6. Natan Al'tman**
Design for Signet Artists' Club, 1919
6 $\frac{1}{4}$ × 9 $\frac{3}{8}$ inches (15.9 × 23.8 cm)
- 7. Yurii Pimenov**
Drawing for *Red Panorama*, 1929
24 $\frac{3}{8}$ × 19 $\frac{3}{8}$ inches (61.9 × 49.2 cm)
- 8. Elena Zernova**
Factory Kitchen, 1928
52 $\frac{3}{4}$ × 29 $\frac{1}{8}$ inches (134 × 74 cm)
- 9. Aleksandr Samokhvalov**
Progress, ca. 1925
24 $\frac{1}{8}$ × 30 $\frac{7}{8}$ inches (61.3 × 78.4 cm)
- 10. Gustav Klutsis**
Design for Advertising Stands, 1922
8 $\frac{1}{4}$ × 11 $\frac{3}{4}$ inches (21 × 29.8 cm)
- 11. Konstantin Vialov**
Maquette for a Circus Flyer, ca. 1925–1930
10 $\frac{1}{4}$ × 7 inches (26 × 17.8 cm)
- 12. Aleksandr Dortman**
Maquette for a Film Poster, ca. 1930
14 $\frac{1}{8}$ × 8 $\frac{1}{4}$ inches (35.9 × 21 cm)
- 13. Nikolai Dolgorukov**
Industrial Safety Poster, ca. 1930
16 $\frac{5}{8}$ × 11 $\frac{1}{8}$ inches (42.2 × 28.3 cm) image
- 14. Nikolai Il'in**
The Destruction of Theatre and the Celebration of Film, 1925
7 × 5 $\frac{1}{4}$ inches (17.8 × 13.3 cm)
- 15. Nikolai Il'in**
Maquette for *The Destruction of Theatre and the Celebration of Film*,
1925
8 $\frac{3}{8}$ × 6 $\frac{1}{2}$ inches (21.3 × 16.5 cm)
- 16. Elena Semenova**
Maquette for a Magazine Advertisement, 1928–1929
12 $\frac{3}{8}$ × 8 $\frac{3}{4}$ inches (31.4 × 22.2 cm)
- 17. Gustav Klutsis**
Color Study, ca. 1924–1930
16 $\frac{7}{8}$ × 13 $\frac{1}{8}$ inches (42.9 × 33.3 cm)
- 18. Gustav Klutsis**
Color Study, ca. 1924–1930
12 $\frac{1}{8}$ × 11 $\frac{3}{8}$ inches (30.8 × 28.9 cm)
- 19. Elena Semenova**
Poster Design for the Central Committee Personnel at the Fourth
Party Congress, ca. 1925–1930
3 $\frac{7}{8}$ × 3 $\frac{3}{4}$ inches (9.8 × 9.5 cm)
- 20. Artist Unknown**
Untitled, ca. 1928–1930
25 $\frac{1}{8}$ × 17 $\frac{1}{4}$ inches (63.8 × 43.8 cm)
- 21. Attributed to Mikhail Razulevich (possibly Sergi Sen'kin)**
Untitled, ca. 1928
13 $\frac{3}{4}$ × 22 $\frac{3}{4}$ inches (34.9 × 57.8 cm)
- 22. Georgii Zimin**
Maquette for a Theater Poster, ca. 1920–1925
12 $\frac{1}{4}$ × 14 $\frac{1}{2}$ inches (31.1 × 36.8 cm)

23. Stenberg Brothers

Costume Design for Inna Chernetskaia's Ballet Studio, 1922

10¼ × 5¼ inches (26 × 13.3 cm) left

10¼ × 5½ inches (26 × 13.3 cm) right

24. Konstantin Vialov

Maquette for *Soviet Film, No. 1*, 1926

13⅞ × 10⅞ inches (35.2 × 26.4 cm)

25. Konstantin Vialov

Soviet Film, No. 1, 1926

13 × 9¾ inches (33 × 24.8 cm)

26. Konstantin Vialov

Maquette for a Circus Flyer, ca. 1925–1930

10⅞ × 6⅞ inches (25.7 × 17.5 cm)

27. Konstantin Vialov

Maquette for a Film Poster, ca. 1925–1930

7 × 5⅞ inches (17.8 × 13 cm)

28. Konstantin Vialov

Maquette for The MGSPS Theater, ca. 1926

6¾ × 5⅞ inches (25.7 × 17.5 cm)

29. Konstantin Vialov

Maquette for *Soviet Art, No. 1*, ca. 1925–1930

10½ × 7¼ inches (26.7 × 18.4 cm)

30. Konstantin Vialov

Maquette for *The Messenger of the Workers of the Arts*, No. 1, 1926

11¾ × 9 inches (29.8 × 22.9 cm)

31. Konstantin Vialov

Maquette for *Culture and Film*, No. 1, ca. 1925–1930

10½ × 7¾ inches (26.7 × 18.7 cm)

32. Grigorii Miller

Maquette for *Theater of the Revolution, Growth*, ca. 1927

8⅞ × 5¾ inches (22.5 × 14.6 cm)

33. Elena Semenova

Typographic Design for *Very Good* by Maiakovskii, ca. 1927

6⅞ × 7⅞ inches (15.6 × 20 cm)

34. Gustav Klutis

Typographic Design for *Technology News*, ca. 1924–1930

6½ × 10½ inches (16.5 × 26.7 cm)

35. Aleksandr Rodchenko

Maquette for *Isbran* by Nikolai Aseev, 1923

6½ × 4⅞ inches (16.5 × 10.5 cm)

36. Aleksandr Rodchenko & Vladimir Maiakovskii

Maquette for a Poster, ca. 1925–1926

10½ × 15¼ inches (26.7 × 38.7 cm)

37. Anonymous

Untitled, ca. 1928–1930

20¼ × 13½ inches (51.4 × 34.3 cm)

38. Aleksandr Dortman

Maquette for *The Insurgents*, ca. 1930

8¼ × 11¾ inches (21 × 29.8 cm)

39. Solomon Telingater

Untitled, 1930

12¾ × 10 inches (32.4 × 25.4 cm)

40. Grigorii Miller

Maquette for Transport Advertisement, ca. 1927

6¼ × 4½ inches (15.9 × 11.4 cm)

41. Esteichov

Untitled, 1930

9¾ × 6⅞ inches (24.8 × 17.5 cm)

42. Elena Semenova

Maquette for *Natural Resources of the U.R.S.S.*, 1926

4⅞ × 6⅞ inches (25.1 × 17.5 cm)

43. Aleksandr Dortman

Maquette for a Book Cover, ca. 1930

4⅞ × 7⅞ inches (11.7 × 18.1 cm)

44. Vassily Elkin

Untitled, ca. 1930

7⅞ × 11 inches (19.4 × 27.9 cm)

45. Gustav Klutsis

Spartakiada Postcards, 1928
5½ × 4 inches (14 × 10.2 cm) each image

46. Vassily Ermilov

Untitled, 1930
12½ × 24 inches (31.4 × 61 cm)

47. Vladimir Lebedev

Untitled, ca. 1926–1927
12¾ × 8⅞ inches (32.1 × 22.5 cm)

48. Vladimir Lebedev

Untitled, 1927
11¾ × 8⅞ inches (28.9 × 22.5 cm)

49. Vladimir Lebedev

Untitled, 1927
11 × 8½ inches (27.9 × 21.6 cm)

50. Vladimir Lebedev

Untitled, 1925
10¾ × 8⅞ inches (26.4 × 20.6 cm)

51. Valentina Kulagina

Preliminary Study for an Industrial Poster, 1933
18½ × 12⅞ inches (47 × 32.7 cm)

52. Aleksandr Deineka

Untitled, 1927
11½ × 12½ inches (29.2 × 31.8 cm)

53. Konstantin Vialov

Untitled, ca. 1930
8¾ × 11¼ inches (21.9 × 28.6 cm)

54. Konstantin Vialov

Untitled, ca. 1930
10⅞ × 14⅞ inches (25.4 × 37.8 cm)

55. Konstantin Vialov

Untitled, ca. 1930
11⅞ × 8½ inches (29.5 × 21.6 cm)

56. Konstantin Vialov

Untitled, ca. 1930
11¾ × 8½ inches (28.9 × 21.6 cm)

57. Elena Melnikova

Untitled, ca. 1930
14¾ × 9⅞ inches (36.5 × 23.2 cm)

58. Nikolai Sidelnikov

Maquette for a Book Cover, ca. 1930–1932
9 × 5⅞ inches (22.9 × 14.9 cm)

59. Vassily Elkin

Untitled, ca. 1928–1930
9⅞ × 6¼ inches (23.2 × 15.6 cm)

60. Vassily Elkin

Untitled, ca. 1928–1930
8¾ × 3¾ inches (21.3 × 8.6 cm)

61. Vassily Elkin

Untitled, ca. 1928–1930
9 × 6⅞ inches (22.9 × 15.6 cm)

62. Vassily Elkin

Untitled, ca. 1928–1930
8¾ × 6⅞ inches (21.3 × 15.6 cm)

63. Vassily Elkin

Untitled, ca. 1930
7 × 9⅞ inches (17.8 × 24.4 cm)

64. P.V. Kukhtenkov

Maquette for a Kostroma Metalworker Factory Advertisement
9¼ × 9¼ inches (35.9 × 35.9 cm)

65. Grigorii Miller

Maquette for *October in the Countryside*, 1927
8⅞ × 5¾ inches (22.9 × 14.9 cm)

66. Gustav Klutsis

Maquette for *All-Russian Proletkul't*, ca. 1923–1925
9 × 7¼ inches (22.9 × 18.4 cm)

67. Esteichov

Maquette for *The Week of War—To the Invalids*, 1923
10¼ × 11 inches (26 × 27.9 cm)

68. Elena Semenova

Untitled, ca. 1925–1926
9¼ × 15 inches (23.5 × 38.1 cm)

69. Elena Semenova

Untitled, ca. 1925–1926
9⅝ × 14⅞ inches (24.4 × 37.1 cm)

70. Gustav Klutsis

Typographic Design for *Young Guards*, ca. 1924–1930
12 × 8½ inches (30.5 × 21.6 cm)

71. Gustav Klutsis

Typographic Design for *Young Guards*, ca. 1924–1930
12 × 8½ inches (30.5 × 21.6 cm)

72. Elena Semenova

Architectural Drawing for a House of Culture, ca. 1926–1928
4¾ × 6½ inches (22.2 × 20.3 cm)

73. Elena Semenova

Architectural Study, 1928
10⅞ × 7⅞ inches (27.6 × 18.7 cm)

74. Elena Semenova

Design for an Exhibition Pavilion, ca. 1928
7¼ × 13⅞ inches (18.4 × 33.3 cm)

75. Valentina Kulagina

Untitled, 1923
9 × 6⅞ inches (22.9 × 16.8 cm)

76. Gustav Klutsis

Color Study, ca. 1924–1930
12½ × 11½ inches (31.8 × 29.2 cm)

77. Gustav Klutsis

Tonal Study, ca. 1924–1930
15⅞ × 7⅞ inches (38.4 × 18.7 cm)

78. Gustav Klutsis

Tonal Study, ca. 1924–1930
4¾ × 3⅞ inches (12.1 × 8.6 cm)

79. Gustav Klutsis

Tonal Study, ca. 1924–1930
5⅞ × 3¾ inches (13 × 9.5 cm)

80. Gustav Klutsis

Color Study, ca. 1924–1930
15⅞ × 10⅞ inches (39.1 × 27 cm)

Special thanks to Jim Frank and Colleen Connolly.

Design: Eileen Boxer

ubu

Ubu Gallery

416 East 59 Street
New York NY 10022

T: 212 753 4444

F: 212 753 4470

E: info@ubugallery.com

www.ubugallery.com

Visit our partner

Galerie Berinson, Berlin

www.berinson.de