

ART | 38 | BASEL

June 13-June 17, 2007

1.



Hans Bellmer

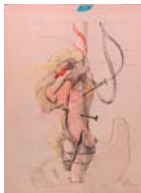
La Poupée ["The Doll"]

1935

Hand-colored vintage gelatin silver print affixed to original mount & stretcher
26 x 26 inches (66 x 66 cm)

Signed in black gouache on recto
(BELL 11)

2.



Hans Bellmer

Untitled

ca. 1934

Ink & watercolor on paper

12 5/8 x 9 3/8 inches (32 x 23.9 cm)

(BELL 282)

3.



Hans Bellmer

Untitled

ca. 1934

Pencil on paper

6 5/8 x 5 1/8 inches (17 x 13 cm)

Signed & dedicated on recto
(BELL 283)

4.



Hans Bellmer

La Poupée ["The Doll"]

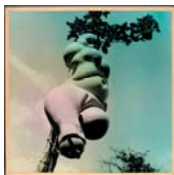
1934

Vintage gelatin silver print affixed to original mount & stretcher

29 7/8 x 20 1/8 inches (75.9 x 51.1 cm)

Signed & dedicated to Elise "Lizica" Codreano on recto / Signed & dated on verso
(BELL 285)

5.



Hans Bellmer

La Poupée ["The Doll"]

1935

Hand-colored vintage gelatin silver print on original binder's board mount

9 3/4 x 9 3/4 x 7/8 inches (24.9 x 24.9 x 20 cm)

Signed on recto
(BELL 286)

6.



Hans Bellmer

Untitled

ca. 1934

White gouache on black paper affixed to black paper mount

12 7/8 x 9 3/4 inches (32.7 x 24.8 cm) - image

20 1/4 x 15 inches (51.4 x 38.1 cm) - mount

Signed & dedicated "pour Lizica Codreano" on recto of mount

(BELL 287)

7.



Hans Bellmer

Untitled

1955

Pencil on paper

7 7/8 x 4 inches (20.2 x 10.2 cm)

Signed & dated on recto

(BELL 290)

8.



Hans Bellmer

Untitled

1955

Pencil on paper

8 1/8 x 5 1/4 inches (20.8 x 13.4 cm)

Signed, dated & annotated "Paris" on recto

(BELL 291)

9.



André Breton

Untitled (from "VVV Portfolio")

ca. 1942

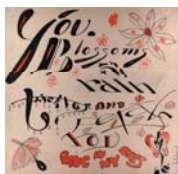
Mixed-media collage

17 1/4 x 13 1/4 inches (43.8 x 33.7 cm) - by sight

Signed on recto

(BRET 1)

10.



Bob Brown

You Blossoms...

ca. 1925

Tempera (ink?) on paper

12 5/8 x 13 1/8 inches (32.1 x 33.3 cm)

Signed on recto

(BBRO 1)

11.



Claude Cahun

Mais tu ne meurs que de regret ["But You Only Die of Regret"]

Jersey, August 1936

Vintage gelatin silver print

8 x 6 inches (20.3 x 15.2 cm)

Signed, titled & dated "Jersey, August 1936" on verso

(CAHU 10)

12.



Claude Cahun

Montent l'escalier ["Climb the Staircase"]

Paris, July 1936

Vintage gelatin silver print mounted on brown stock

5 3/8 x 5 1/8 inches (13.7 x 13 cm) - image

Titled on recto / Signed & dated "Paris, July 1936" on verso
(CAHU 14)

13.



Claude Cahun

L'Herbe au pauvre homme ["The Poor Man's Grass"]

ca. 1936

Vintage gelatin silver print with gouache

7 x 9 3/8 inches (17.8 x 23.8 cm) - sheet

Titled on verso

(CAHU 20)

14.



Claude Cahun

Qui ne craint pas le grand méchant loup remet la barque sur sa quille et vogue à la dérive
["Who isn't Afraid of the Big, Bad Wolf that Puts the Boat on its Keel and Sets Sails Adrift"]

ca. 1936

Vintage gelatin silver print

9 3/8 x 7 inches (23.8 x 17.8 cm)

Titled on verso

(CAHU 21)

15.



Louis Corinth

Thomas Corinth

1922

Wax crayon on paper

12 1/4 x 9 3/4 inches (31 x 25 cm)

(CORI 1)

16.



Salvador Dalí

Gradiva

ca. 1930 - 1935

Ink on paper

12 1/4 x 6 5/8 inches (31.1 x 16.8 cm) - sight size in frame

Certificate of Georges Hugnet dated 1958 on verso

(DALI 2)

17.



Burgoyne Diller

First Theme

1942

Painted wood construction

23 3/4 x 23 3/4 x 3 1/4 inches (60.3 x 60.3 x 8.3 cm)

Signed & dated on verso

(DILL 1)

18.



Otto Dix

Sketch

1922

Etching

15 1/2 x 11 5/8 inches (39.4 x 29.5 cm) - image

19 5/8 x 16 7/8 inches (49.8 x 42.9 cm) - sheet

Artist's proof

Signed, titled, dated & annotated on recto

(DIX 7)

19.



Otto Dix

Maud Arizona (Suleika das tatowierte wunder) ["Maud Arizona (the Tattooed Wonder)"]

1922

Etching

11 3/4 x 7 3/4 inches (29.8 x 19.7 cm) - image

19 5/8 x 16 7/8 inches (49.8 x 42.9 cm) - sheet

Artist's proof

Signed, titled & numbered on recto

(DIX 9)

20.



Otto Dix

Der Selbstmörder ["The Suicide"]

1922

Etching

13 3/4 x 11 inches (34.9 x 27.9 cm) - image

19 1/2 x 17 inches (49.5 x 43.2 cm) - sheet

Ed. 9/50

Signed, dated & numbered on recto

(DIX 10)

21.



Otto Dix

Alte Dirne ["Old Whore"]

1922

Etching

13 3/4 x 11 1/8 inches (34.9 x 28.3 cm) - image

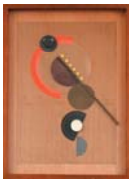
19 1/2 x 16 3/8 inches (49.5 x 41.6 cm) - sheet

Ed. 16/50

Signed, dated & numbered on recto

(DIX 11)

22.



Cesar Domela

Construction #1 (Collage)

1935

Mixed-media relief

19 1/2 x 13 1/2 inches (49.5 x 34.3 cm)

Signed & titled on recto / Name & date on verso

(DOME 19)

23.



Max Ernst

Die Schlange ["The Snake"]

1923

Oil on canvas

25 5/8 x 19 5/8 inches (65.1 x 49.8 cm)

Catalogue raisonné #613

(MERN 5)

24.



Max Ernst

Untitled (from "VVV Portfolio")

ca. 1942

Oil pastel on paper

17 1/2 x 13 1/2 inches (44.5 x 34.3 cm) - by sight

Signed on recto

(MERN 6)

25.



David Hare

Untitled (from "VVV Portfolio")

ca. 1942

Vintage gelatin silver print from a heat-altered negative ("brulage")

12 x 9 3/4 inches (30.5 x 24.8 cm) - image

16 3/8 x 13 7/8 inches (41.6 x 35.2 cm) - mount

Signed on recto

(HARE 4)

26.



Auguste Herbin

Composition a deux personages ["Composition with Two Personages"]

1930

Oil on canvas

58 1/2 x 23 1/2 inches (148.6 x 59.7 cm)

Signed on recto

(HERB 1)

27.



Gussy Hippold-Ahnert

Liegender Akt ["Reclining Nude"]

1931

Oil & tempera on panel

17 3/4 x 26 1/2 inches (45.0 x 67.6 cm)

Signed & dated on verso

(HIPPP 1)

28.



Hannah Höch

Goldener Mond ["Golden Moon"]

1923

Collage & gouache on black construction paper

7 9/16 x 10 7/16 inches (19.2 x 26.5 cm)

Titled & initialed on recto / Signed, titled & dated on verso

(HOCH 9)

29.



Heinrich Hoerle

Der Fischer ["The Fisherman"]

1935

Wax & pencil on paper

82 1/2 x 43 1/2 inches (209.6 x 110.5 cm)

Signed & dated

(HOER 4)

30.



Heinrich Hoerle

Der Arbeiter ["The Worker"]
ca. 1931-1933
Oil on canvas
31 7/8 x 24 inches (81 x 61 cm)
(HOER 5)

31.



Heinrich Hoerle

Selbstbildnis ["Self Portrait"]
ca. 1931-1933
Oil on canvas
16 1/8 x 11 3/8 inches (41 x 28.9 cm)
(HOER 6)

32.



André Masson

Untitled (Horse Head & Fish)
1926
Charcoal on paper
24 3/4 x 18 7/8 inches (63 x 48 cm)
Signed on recto
(MASS 1)

33.



(Roberto) Matta

Untitled (from "VVV Portfolio")
ca. 1942
Watercolor & graphite pencil on paper
16 1/8 x 12 1/4 inches (41 x 31.1 cm)
Ed. 19/20
Signed & numbered on recto
(MATT 1)

34.



László Moholy-Nagy

Von der Brücke ["From the Bridge"]
1929
Vintage gelatin silver print
19 5/8 x 15 3/8 inches (49.8 x 39.1 cm)
Signed & titled on verso / Numerous photo society exhibition labels on verso
(MOHO 10)

35.



László Moholy-Nagy

SRho 1
1936
Oil & incising on rhodoid (affixed to original black painted wood mount)
31 x 25 1/2 inches (78.7 x 64.8 cm) - rhodoid
35 7/8 x 33 7/8 inches (91.1 x 86 cm) - mount
Signed, titled & dated on verso
(MOHO 21)

36.



Johannes Molzahn

Kussverbot ["No Kissing"]

1920

Collage

12 5/8 x 17 3/8 inches (32.1 x 44.1 cm)

Signed within text

(MOLZ 2)

37.



Robert Motherwell

Untitled (from "VVV Portfolio")

ca. 1942

Watercolor & ink on paper

8 3/4 x 6 inches (22.2 x 15.2 cm) - image

13 1/2 x 10 1/2 inches (34.3 x 26.7 cm) - mount

Signed on recto

(MOTH 1)

38.



Yva (Elsa Neuländer-Simon)

Seidenstrümpfe ["Silk Stockings"]

1928

Vintage gelatin silver print affixed to original mount

8 1/2 x 6 inches (21.7 x 15.4 cm) - image

9 x 11 3/8 inches (22.8 x 28.9 cm) - sheet

Annotated on recto of mount

(YVA 4)

39.



Richard Oelze

Am Ende verschleiert ["Veiled at the End"]

1961

Oil on canvas

39 1/4 x 31 1/2 inches (100 x 80 cm)

Signed on recto

(OELZ 17)

40.



Richard Oelze

Nach der Erzählung eines Traumes ["After the Narration of a Dream"]

1961

Oil on canvas

31 1/2 x 39 1/4 inches (80 x 100 cm)

Signed on recto

(OELZ 18)

41.



Richard Oelze

Einsamer Wunsch ["Lonely Desire"]

1967

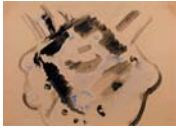
Oil on canvas

31 1/2 x 39 1/2 inches (80 x 100 cm)

Signed on recto

(OELZ 25)

42.



Francis Picabia

Etude de mécanique ["Mechanical Study"]

ca. 1916-1918

Watercolor & ink on paper

10 1/2 x 15 1/4 inches (26.7 x 38.7 cm)

Signed on recto within image (lower left)

(PICA 4)

43.



Francis Picabia

Untitled

Ink on paper

5 x 7 3/8 inches (12.7 x 18.7 cm)

Signed on recto

(PICA 5)

44.



Albert Renger-Patzsch

Das Bäumchen ["Sapling"]

1929

Vintage gelatin silver print

15 x 11 inches (38.1 x 27.9 cm)

Stamped, titled & dated on verso

(RENG 26)

45.



Albert Renger-Patzsch

Dorf Sosa im Erzgebirge ["Village of Sosa in the Ore Mountains"]

ca. 1937

Vintage gelatin silver print

6 1/2 x 8 1/8 inches (16.5 x 20.8 cm)

Signed, stamped, titled, numbered & annotated on verso

(RENG 30)

46.



Albert Renger-Patzsch

Landschaft bei Hamburg ["Landscape near Hamburg"]

ca. 1930

Vintage gelatin silver print

6 5/8 x 9 inches (17 x 23 cm) - sheet

Titled, stamped & annotated on verso

(RENG 31)

47.



Aleksandr Rodchenko

Portrait of Mayakovsky (Majakowsky)

ca. 1926

Vintage gelatin silver print

11 3/4 x 8 7/8 inches (29.8 x 22.7 cm)

Stamped on verso

(RODC 53)

48.



August Sander

Kleinstädter ["Small Town Couple"]

1926

Vintage gelatin silver print

6 x 6 7/8 inches (15.4 x 17.5 cm) - image

11 1/2 x 9 7/8 inches (29.4 x 25.2 cm) - sheet

Annotated & dated on mount

(SAND 4)

49.



Georg Scholz

Industriebauern ["Industrial Peasants"]

1920

Hand-colored lithograph

15 3/4 x 18 1/2 inches (40 x 47 cm) - image

(SCHO 11)

50.



Kurt Schwitters

Mz 183

1921

Collage, oil & watercolor on card

7 x 4 7/8 inches (17.8 x 12.4 cm) - sheet

Signed, titled & dated on recto

Catalogue raisonné #807

(SCHW 3)

51.



Kurt Schwitters

Mz 159 / Rot Oben Links ["Red Top Left"]

1920

Collage, oil, watercolor & pencil on card

3 x 2 1/2 inches (7.6 x 6.3 cm) - image

7 1/4 x 5 1/8 inches (18.4 x 13 cm) - overall dimension in original artist's frame

Signed, titled & dated on recto

Catalogue raisonné #697

(SCHW 4)

52.



Kurt Schwitters

A Dim Bulb

1947

Collage

5 1/2 x 4 inches (13.9 x 10.4 cm) - image

8 1/4 x 5 7/8 inches (21.2 x 15.1 cm) - sheet

Signed on recto

(SCHW 85)

53.



Arthur Segal

Komposition mit Halbmond ["Composition with Half Moon"]

1919

Oil on canvas (burlap) with artist's painted wood frame

34 1/8 x 42 inches (86.7 x 106.5 cm)

Signed & dated on recto

(SEGA 1)

54.



Arthur Segal

Regenbogen (prismatisch) ["Rainbow (prismatic)"]
1924

Oil on canvas (burlap) with artist's painted wood frame
41 1/2 x 33 3/4 inches (105.4 x 85.7 cm)

Signed & dated on recto / Signed on stretcher bar & with paper label on verso of canvas (SEGA 2)

55.



Franz Seiwert

Ländliche Familie (Familie Jatho) ["Rural Family (Jatho Family)"]
1923

Oil on panel
15 x 17 1/2 inches (38.1 x 44.5 cm)

(SEIW 3)

56.



Franz Seiwert

Wandbild für einen Fotografen (August Sander) ["Mural for a Photographer (August Sander)"]
1925

Oil on canvas
43 1/4 x 60 3/4 inches (109.9 x 154.3 cm)
(SEIW 4)

57.



Kurt Seligmann

The Painter [also "The Artist"]
1944

Oil on canvas
20 x 15 inches (50.8 x 38.1 cm)
Signed on recto / Titled on stretcher
(SELI 2)

58.



Leon Tutundjian

Untitled
1928

Oil on canvas
28 7/8 x 36 1/4 inches (73.3 x 92.1 cm)

Signed lower right on recto / Signed & dated "Tutundjian 1928 Paris" on stretcher bar (TUTU 4)

59.



Various

Colophon for "VVV Portfolio"
ca. 1942

Printed folder containing 11 works of art by various artists
(Five original works [framed], six prints in portfolio)
18 x 14 inches (45.7 x 35.6 cm)

One of 50 examples (although less than 20 are thought to have been produced)
(VVV 1)

60.



Wols (Alfred Otto Wolfgang Schulze)
Pavillon de l'elegance (Madeleine Vionnet)
1937
Vintage gelatin silver print
11 3/8 x 7 inches (28.9 x 17.8 cm)
Stamped on verso
(WOLS 4)

61.



Wols (Alfred Otto Wolfgang Schulze)
Portrait Nicole Boubant
ca. 1933
Vintage gelatin silver print
9 1/8 x 7 inches (23.2 x 18 cm)
(WOLS 6)

62.



Wols (Alfred Otto Wolfgang Schulze)
Clochards an der Seine ["Vagrants at the Seine"]
1933
Vintage gelatin silver print
6 5/8 x 4 3/4 inches (17 x 12 cm)
(WOLS 7)

63.



Unica Zürn
Untitled
1963/1965
Ink & watercolor on paper
19 1/2 x 25 1/4 inches (49.5 x 64.1 cm)
Signed & dated twice on recto
(ZURN 5)

64.



Unica Zürn
Untitled
1966
Ink on paperboard
12 3/4 x 9 3/4 inches (32 x 25 cm)
(ZURN 23)

65.



Unica Zürn
Untitled
1963
Ink on paper
19 1/2 x 25 1/8 inches (49.5 x 63.8 cm)
Signed & dated on recto
(ZURN 32)

66.



Unica Zürn

Untitled

1961

Ink on paper

12 3/8 x 9 1/4 inches (31.4 x 23.5 cm)

Signed & dated "St. Anne, Nov. 61" on recto
(ZURN 82)

67.



Unica Zürn

Untitled

1961

Ink on paper

12 3/8 x 9 1/4 inches (31.4 x 23.5 cm)

Signed & dated "St. Anne, Nov. 61" on recto
(ZURN 85)

68.



Unica Zürn

Untitled

1961

Ink on paper

12 3/8 x 9 1/4 inches (31.4 x 23.5 cm)

Signed & dated "St. Anne, December 61" on recto
(ZURN 89)