

ubu

RICHARD OELZE (1900-1980): Paintings & Drawings from the 1950s & 1960s

February 8–May 12, 2007

---

Numbers refer to "Richard Oelze 1900-1980: Gemälde und Zeichnungen,"  
Akademie der Künste, Berlin, 1987.

1.



*Studie zu "In einem späteren Jahr" (Wenn auch von anderer Schönheit II)*  
[Study for "In One of the Following Years (When Also of Another Beauty II)"]

1967

Pencil on tracing paper

19 x 16 1/4 inches (48.3 x 41.2 cm)

#S58 (OELZ 36)

2.



*Platz der Urnen* ["Place of the Urns"]

1962

Oil on canvas

25 2/3 x 19 3/4 inches (65 x 50 cm)

#115 (OELZ 19)

3.



*Statt Blumen und Blut* ["Instead of Flowers and Blood"]

1963

Oil on canvas

Signed on recto

52 x 63 3/4 inches (132 x 162 cm)

#125 (OELZ 23)

4.



*Wald* ["Forest"]

1963-64

Oil on canvas

Signed on recto

50 3/8 x 63 1/4 inches (128 x 160.7 cm)

#126 (OELZ 3)

5.



*In einem späteren Jahr (Wenn auch von anderer Schönheit II)*  
["In One of the Following Years (When Also of Another Beauty II)"]

1967

Oil on canvas

Signed on recto

39 3/8 x 31 1/2 inches (100 x 80 cm)

#145 (OELZ 1)

6.



*Zeichnung* (Ikarus-serie) [Drawing from "Ikarus" Series"]  
1960-1961  
Charcoal on paperboard  
Signed on recto  
25 x 31 inches (63.5 x 78.7 cm)  
(OELZ 47)

7.



*Troglodytenmauer* ["Troglodyte Wall"]  
1957  
Oil on canvas  
Signed on recto  
38 1/2 x 49 1/4 inches (98 x 125 cm)  
#70 (OELZ 12)

8.



*Bis der Tag kommt* ["Until the Day Comes"]  
1959-1960  
Oil on canvas  
Signed on recto  
39 1/4 x 49 1/4 inches (100 x 125 cm)  
#101 (OELZ 16)

9.



*Traumlandschaft* ["Dream Landscape"]  
1961  
Pencil on paper  
Signed on recto  
24 1/2 x 35 3/8 inches (62.2 x 89.9 cm)  
(OELZ 4)

Office (on the Mezzanine):

10.



*Moor-Geister* ["Swamp Ghost"]  
ca. 1952  
Pencil on paper  
Signed on recto  
8 1/4 x 11 3/4 inches (21 x 30 cm)  
#Z86 (OELZ 46)

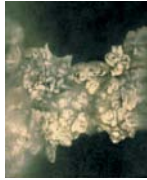
Exhibition continues downstairs:

11.



*Vert* ["Green"]  
1962  
Oil on canvas  
Signed on recto  
19 3/4 x 25 1/2 inches (50 x 65 cm)  
#121 (OELZ 21)

12.



*Am Ende verschleiert* ["Veiled at the End"]  
1961  
Oil on canvas  
Signed on recto  
39 1/4 x 31 1/2 inches (100 x 80 cm)  
#111 (OELZ 17)

13.



*Ohne andere Gesellschaft* ["Without Other Society"]  
1964  
Oil on canvas  
Signed on recto  
25 1/2 x 32 inches (65 x 81 cm)  
#129 (OELZ 24)

14.



*Sanssouci I* ["Carefree I"]  
ca. 1955  
Oil on canvas  
Signed on recto  
19 3/4 x 25 1/2 inches (50 x 65 cm)  
#60 (OELZ 10)

15.



*Rotfarbenes* ["Red Colored One"]  
1962  
Oil on masonite  
17 3/4 x 24 2/3 inches (45 x 62.5 cm)  
#123 (OELZ 22)

16.



*Landschaft mit Kapelle* ["Landscape with Chapel"]  
1947  
Oil on paperboard  
Signed on recto  
19 1/4 x 25 1/2 inches (49 x 65 cm)  
#24 (OELZ 5)

17.



*Imaginäres Porträt* ["Imaginary Portrait"]  
ca. 1954  
Oil on paperboard  
Signed on recto  
20 x 16 3/4 inches (51 x 42.5 cm)  
#49 (OELZ 7)

18.



*Alter* ["Old Age"]  
ca. 1954  
Oil on paperboard  
20 x 16 3/4 inches (51 x 42.5 cm)  
#50 (OELZ 8)

19.



*Urwaldkirche* ["Jungle Church"]  
1959  
Oil on masonite  
Signed on verso  
9 1/2 x 12 1/2 inches (24 x 32 cm)  
#96 (OELZ 15)

20.



*Kleiner Park* ["Small Park"]  
1953  
Oil on masonite  
Signed on recto  
11 x 13 1/4 inches (28 x 35 cm)  
#48 (OELZ 6)

21.



*Studie zu "Daphne-Büste"* [Study for "Daphne's Bust"]  
ca. 1955  
Mixed media on masonite  
21 1/2 x 8 inches (54.7 x 20.5 cm)  
#S33 (OELZ 31)

22.



*Einsamer Wunsch* ["Lonely Desire"]  
1967  
Oil on canvas  
Signed on recto  
31 1/2 x 39 1/2 inches (80 x 100 cm)  
#143 (OELZ 25)

23.



*Studie* [Study]  
ca. 1968  
Black chalk on paper  
19 x 24 2/3 inches (48.5 x 62.5 cm)  
#S73 (OELZ 44)

24.



*Studie* [Study]  
1966  
Pencil on paper  
19 x 24 1/4 inches (48 x 61.5 cm)  
#S53 (OELZ 35)

25.



*Studie zu Vegetation II* [Study for "Vegetation II"]  
1955  
Pencil on paper  
19 1/3 x 24 1/3 inches (49 x 62 cm)  
#S34 (OELZ 32)

26.



*Studie zu "Es gibt viele Enden der Welt"*  
[Study for "There are Many Ends of the World"]  
1967  
Pencil on tracing paper  
19 1/3 x 16 1/2 inches (49 x 41.7 cm)  
#S61 (OELZ 37)

27.



*Vogelstudie* ["Bird Study"]  
1968  
Pencil on tracing paper  
11 2/3 x 8 1/2 inches (29.5 x 21.5 cm)  
#S67 (OELZ 41)

28.



*Tierstudie* ["Animal Study"]  
1968  
Pencil on tracing paper  
13 1/3 x 8 1/3 inches (34 x 21 cm)  
#S65 (OELZ 39)

29.



*Vogelstudie* ["Bird Study"]  
1968  
Pencil on tracing paper  
13 1/2 x 8 inches (34.5 x 20 cm)  
#S66 (OELZ 40)

30.



*Studie zu "Ornithologisches Bildnis"* [Study for "Ornithological Portrait"]  
1968  
Pencil on tracing paper  
11 2/3 x 8 1/3 inches (29.5 x 21 cm)  
#S71 (OELZ 42)

31.



*Studie* [Study]  
1968  
Black chalk on Ingres paper  
19 x 24 1/2 inches (48 x 62 cm)  
#S77 (OELZ 45)

32.



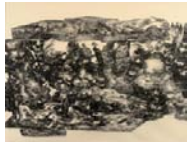
*Zeichnung (Kohre-Serie)* [Drawing from "Kohre" Series]  
1959  
Black chalk on Ingres paper  
Signed on recto  
19 x 24 2/3 inches (48.5 x 62.5 cm)  
#Z118 (OELZ 27)

33.



*Studie zu "Phase"* [Study for "Phase"]  
1958  
Black chalk on paper  
Signed on verso  
19 3/4 x 25 1/2 inches (50.3 x 64.7 cm)  
#S42 (OELZ 33)

34.



*Zeichnung (Holofernes-Serie)* [Drawing from "Holofernes" Series]  
1961-1962  
Black chalk on paper  
Signed on recto  
23 2/3 x 29 1/2 inches (60 x 75 cm)  
#Z131 (OELZ 29)

35.



*Felsenschiff I (Studie zu "Um seiner selbst willen*  
["Rock Ship I" (Study for "Ones Own Sake")]  
1968  
Pencil on tracing paper  
19 x 23 2/3 inches (48 x 60 cm)  
#S63 (OELZ 38)

36.



*Nach der Erzählung eines Traumes* ["After the Narration of a Dream"]  
1961  
Oil on canvas  
Signed on recto  
31 1/2 x 39 1/3 inches (80 x 100 cm)  
#112 (OELZ 18)

37.



*Landschaftliches Geheimnis* ["Landscape's Secret"]  
1959  
Oil on canvas  
Signed on recto  
31 1/2 x 39 1/4 inches (80 x 100 cm)  
#87 (OELZ 14)

38.



*Losone-landschaft* ["Losone Landscape"]  
1959  
Oil on canvas  
Signed on recto  
31 1/2 x 39 1/4 inches (80 x 100 cm)  
#86 (OELZ 13)

39.



*Sensible Entwurzelung* ["Sensitive Uprooting"]  
1962  
Oil on canvas  
Signed on recto  
19 3/4 x 25 1/2 inches (50 x 65 cm)  
#116 (OELZ 20)

40.



*Tal Josaphat* ["Valley of Josaphat"]  
1969-1970  
Oil on masonite  
31 1/2 x 39 inches (80 x 99 cm)  
#157 (OELZ 26)

41.



*Am Fluss der Klagen* ["At the River of Complaints"]  
1955  
Oil on masonite  
19 x 23 1/2 inches (48.5 x 60 cm)  
#59 (OELZ 9)