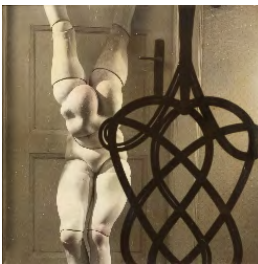


ubu



Hans Bellmer
Das Panorama ["The Panorama"]
July 13, 1932
Gouache & pencil on paper
4 3/4 x 4 7/8 inches (12.1 x 12.4 cm)
Signed, inscribed "Marseille," titled & dated
on recto
(BELL 414)



Hans Bellmer
La Poupée ["The Doll"]
1935 (printed 1938 or earlier)
Hand-colored vintage gelatin silver print
affixed to contemporary archival mount
16 3/8 x 16 1/2 inches (41.7 x 41.9 cm)
(BELL 34)



Hans Bellmer
La Poupée ["The Doll"] (p. 16, bottom right)
1934
Vintage gelatin silver print
3 3/4 x 2 5/8 inches (9.5 x 6.7 cm)
(BELL 117)



Hans Bellmer
La Poupée ["The Doll"] (p. 18, bottom)
1934
Vintage gelatin silver print
3 x 2 1/4 inches (7.8 x 5.7 cm)
(BELL 110)



Hans Bellmer
La Poupée ["The Doll"] (p. 54, bottom)
1935
Vintage gelatin silver print
3 1/2 x 2 1/2 inches (8.9 x 6.3 cm)
(BELL 255)



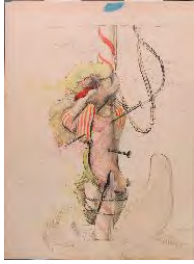
Hans Bellmer
La Poupée ["The Doll"] (p. 77, b/w)
1935
Vintage gelatin silver print
3 1/4 x 2 1/8 inches (8.3 x 5.4 cm)
(BELL 256)



Hans Bellmer
La Poupée ["The Doll"] (p. 83, b/w)
1935
Vintage gelatin silver print
2 1/2 x 2 7/8 inches (6.3 x 7.3 cm)
(BELL 267)



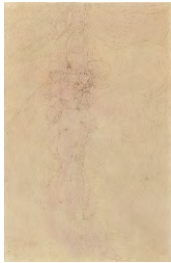
Hans Bellmer
Marseille
1932
Oil on panel
21 1/4 x 25 1/2 inches (54 x 65 cm)
Signed & dated on recto
(BELL 413)



Hans Bellmer
Untitled
ca. 1934
Ink & watercolor on paper
12 5/8 x 9 3/8 inches (32 x 23.9 cm)
29 1/4 x 10 7/8 x 33 1/4 inches (74.3 x 27.6 x 84.5 cm)
(BELL 282)



Hans Bellmer
Untitled
(Jeune fille bicéphale assise) ["Seated Double-headed Girl"]
ca. 1934
White gouache on black paper affixed to black paper mount
12 7/8 x 9 3/4 inches (32.7 x 24.8 cm) - image
20 1/4 x 15 inches (51.4 x 38.1 cm) - mount
Signed & dedicated "pour Lizica Codreano" on recto / Drawing on verso
(BELL 287)



Hans Bellmer
Untitled (possibly a portrait of Joyce Reeves)
1939
Pencil & watercolor on paper
18 7/8 x 12 inches (47.9 x 30.5 cm)
(BELL 393)



Hans Bellmer
Untitled (Study for André Pieyre de Mandiargues's L'Anglais décrit dans le chataeu fermé; first engraving for Mode d'Emploi, 1967)
1953
Ink on paper
8 1/4 x 5 1/4 inches (21 x 13.3 cm)
(BELL 417)



Hans Bellmer
Untitled (variant of the drawing for Les Marionnettes [1969])
1958
Oil, gouache & pencil on canvas
6 1/4 x 4 3/4 inches (15.9 x 12.1 cm)
Signed & dated on verso at top of stretcher bar
(BELL 412)



Hans Bellmer
La Poupée ["The Doll"] (p. 100, b/w)
1935
Vintage gelatin silver print
2 1/2 x 2 1/2 inches (6.3 x 6.3 cm)
(BELL 136)



Janusz Maria Brzeski
Lesbos I
From the cycle "Sex"
1930
Collage of halftone cut-outs & ink on buff stock
12 3/4 x 9 7/8 inches (32.4 x 25.1 cm)
Signed & dated with inscribed location "Paris" on recto
(BRZE 121)



Janusz Maria Brzeski
Współzycie ["Coexistence"]
From the cycle "Sex"
1930
Collage of halftone cut-outs & ink on buff stock
12 3/4 x 9 3/4 inches (32.4 x 24.8 cm)
Signed & dated with inscribed location "Paris" on recto
(BRZE 22)



Joseph Cornell
Le Bouvier de l'atlas de Bayer (1603)
["The Herdsman of Atlas of Bayer"]
ca. 1934
Collage
9 x 6 3/4 inches (22.9 x 17.1 cm)
(CORN 11)



Joseph Cornell
Untitled
1930s
Collage
3 7/8 x 3 inches (9.8 x 7.6 cm) - image
10 x 7 1/2 inches (25.4 x 19.1 cm) - sheet
(CORN 13)



Joseph Cornell
Untitled
1930s
Collage
10 x 7 3/8 inches (25.4 x 18.7 cm)
(CORN 14)



Joseph Cornell
Untitled
1930s
Collage
7 3/4 x 4 3/4 inches (19.7 x 12.1 cm) - image
9 3/4 x 7 1/4 inches (24.8 x 18.4 cm) - sheet
(CORN 15)



Joseph Cornell
Untitled
1930s
Collage
9 3/4 x 7 3/8 inches (24.8 x 18.7 cm)
(CORN 16)



Joseph Cornell
Untitled
1930s
Collage
9 7/8 x 7 3/8 inches (25.1 x 18.7 cm)
(CORN 17)



Joseph Cornell
Untitled
1930s
Collage
9 7/8 x 7 3/8 inches (25.1 x 18.7 cm)
(CORN 21)



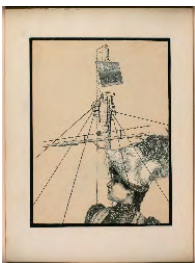
Joseph Cornell
Untitled
1930s
Collage
9 7/8 x 7 1/4 inches (25.1 x 18.4 cm)
(CORN 22)



Joseph Cornell
Untitled
1930s
Collage
10 x 7 1/2 inches (25.4 x 19.1 cm)
(CORN 24)



Joseph Cornell
Untitled
1930s
Collage
10 x 7 1/2 inches (25.4 x 19.1 cm)
(CORN 26)



Joseph Cornell
Untitled
1930s
Collage
10 1/8 x 7 3/8 inches (27.6 x 18.7 cm)
(CORN 27)



Joseph Cornell
Untitled
1930s
Collage
9 7/8 x 7 3/8 inches (25.1 x 18.7 cm)
(CORN 28)



Joseph Cornell

Untitled

1933

Collage

4 1/2 x 3 7/8 inches (11.4 x 9.8 cm) - image

9 7/8 x 7 1/4 inches (25.1 x 18.4 cm) - sheet

Signed & dated in pencil on verso

(CORN 9)



Jean Crotti

Priere Bolcheviki ["Bolshevik's Prayer"]

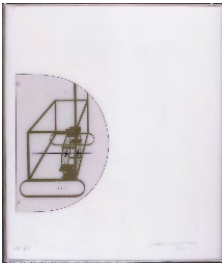
1920

Gouache on paper

24 x 18 1/2 inches (61 x 47 cm)

Signed & dated on recto

(CROT 4)



Marcel Duchamp

The White Box (A l'Infinifif)

1966

Fascimile reproductions (79) of unpublished
manuscript notes of artist, 1912-1920

13 x 11 x 1 1/2 inches (33 x 27.9 x 3.8 cm)

Ed. 146/150

Signed, titled & editioned on recto of case

(DUCH 18)



Max Ernst & Leonora Carrington

La Rencontre ["The Meeting"]

ca. 1939

Oil on canvas

21 5/8 x 25 1/2 inches (54.9 x 64.8 cm)

(MERN 42)



Max Ernst

Composition au Soleil

1958

Oil on panel

5 1/2 x 3 1/4 inches (14 x 8.3 cm)

Signed on recto

(MERN 44)



Max Ernst
Desire
Illustration for "Carmel", chapter 2
1929-1930
Collage
5 5/8 x 5 1/4 inches (14.3 x 13.3 cm)
Signed & titled on recto
(MERN 46)



Baroness Elsa von Freytag-Loringhoven
Equinox
ca. 1922
Ink on paper
10 1/4 x 7 1/4 inches (26 x 18.4 cm)
Initialed & inscribed to Djuna Barnes on recto
(FREY 1)



Baroness Elsa von Freytag-Loringhoven
Facing
1924
Ink & pastel on foil
7 1/2 x 4 1/4 inches (19.1 x 10.8 cm)
Initialed & inscribed to Djuna Barnes on recto
(FREY 2)



Baroness Elsa von Freytag-Loringhoven
Wheels are Growing on Rose Bushes
1921-1922
Ink on paper
5 3/4 x 8 3/4 inches (14.6 x 22.2 cm)
Initialed on recto
(FREY 3)



George Grosz
Ich will alles um mich her ausrotten, was mich einschränkt, daß ich nicht herr bin
["I will root up from my path whatever obstructs me from becoming the master"]
1922
Ink on paper
24 3/4 x 19 3/4 inches (62.9 x 50.2 cm)
(GROS 47)



Jindřich Heisler
Untitled
from the series De la même farine ["Of the Same Ilk"]
1944
Vintage gelatin silver print
6 7/8 x 9 1/4 inches (17.5 x 23.5 cm)
Signed, titled & dated by Toyen on verso
(HEIS 13)



Jindřich Heisler
Untitled ("Object")
1943
Vintage gelatin silver print
11 x 7 5/8 inches (27.9 x 19.4 cm)
Signed, inscribed & dated by Toyen on verso
(HEIS 12)



Georges Hugnet
Le retour au passé ["The Return to the Past"]
1936
Collage of decalcomania (ink wash) &
halftone cut-outs on board
9 3/4 x 14 7/8 inches (24.8 x 37.8 cm)
Signed & dated on recto
(HUGN 6)



Georges Hugnet
Untitled (from *La Vie amoureuse des Spumifères*)
ca. 1948
Gouache on vintage post card (ca. 1920)
5 1/2 x 3 1/2 inches (14 x 8.9 cm)
Photo-certificate of Myrtille Hugnet
(HUGN 1)



Georges Hugnet
Untitled (from the series "*La Vie amoureuse des Spumifères*")
ca. 1948
Gouache on vintage carte postale
5 1/2 x 3 1/2 inches (14 x 8.9 cm)
Initialed on recto
(HUGN 54)



Marcel Jean
L'Avenir immédiat ["The Immediate Future"]
1948
India ink & pencil on paper
11 6/8 x 8 7/8 inches (29.8 x 22.5 cm)
Signed on recto
(JEAN 2)



Paul Joostens
Untitled
1917
Collage
10 3/8 x 11 inches (26.5 x 28 cm)
Signed & dated in lower right
(JOOS 1)



Gerome Kamrowski
Embalmed Universe
ca. 1939
Shadow-box collage
14 1/2 x 16 inches (36.8 x 40.6 cm)
Signed in gouache on recto
(KAMR 1)



Gerome Kamrowski
Embalmed Universe #2 (Cosmo-Porno Principia)
1939
Shadow-box collage
16 3/8 x 14 3/8 inches (41.6 x 36.5 cm)
Signed & titled in gouache on recto / Signed & titled on verso
(KAMR 2)



Oskar Kokoschka
Drama-Komoedie ["Drama-Comedy"] /
Sommertheater in der Kunstschau ["Summer Theater in the Arts Show"]
Albert Berger, Vienna, 1909
Color lithograph
45 1/2 x 30 3/4 inches (115.6 x 78.1 cm)
(KOKO 1)



Louise (Lou) Loeber & Dirk Koning

Untitled (Astroloog)

ca. 1925

Gouache on paper

27 1/8 x 20 5/8 inches (68.9 x 52.4 cm)

Hand-stenciled by the artists

(LOEB 24)



Louise (Lou) Loeber & Dirk Koning

Untitled (Expositie Laren Leeszaal)

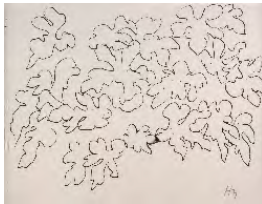
ca. 1925

Gouache on paper

25 1/2 x 19 1/4 inches (64.8 x 48.9 cm)

Hand-stenciled by the artists

(LOEB 23)



Henri Matisse

Feuilles ["Leaves"]

1941

Ink on paper

8 x 11 inches (20.3 x 27.9 cm)

Initialed in pencil on recto

(MATI 2)



Koloman Moser

Wiener Werkstätte Modernes Kunstgewerbe

Städtige Ausstellung ["Vienna Workshop

Contemporary Crafts Exhibition, Städtige"]

ca. 1905

Lithograph with pencil & gouache

34.4 x 24.8 inches (87.4 x 63 cm)

(KMOS 1)



Francis Picabia

Source des Evangiles / Calculs et Documents

1920

Ink on invitation card

4 5/8 x 3 1/2 inches (11.7 x 8.9 cm)

Authenticated by the Comité Picabia (2005)

(PICA 9)



Andre Racz
Study with Egg and Parachutist #6
1943
Collage
13 3/4 x 21 5/8 inches (34.9 x 54.9 cm)
Signed & dated on recto
(RACZ 9)



Man Ray
Boîte à Pandora ["Pandora's Box"]
1952-1973
Mixed media assemblage
15 1/4 x 13 1/4 inches (38.7 x 33.7 cm)
Signed in pen, titled & dated on recto / Titled
& inscribed "pour Fausta - Essai originale
1952, Man Ray - 1963, Don - Paris - 1973" on
verso
(RAY 35)



Man Ray
Enough Rope II
Il Fauno, Turin, 1973
Artist's proof from an Edition of 7
Rope & wood stick in box
3 x 3 x 23 1/2 inches (7.6 x 7.6 x 59.7 cm)
Signed, titled & annotated "E.A." on wood
stick
(RAY 32)



Man Ray
Lampshade
édition MAT, 1964
Painted aluminum
30 x 15 inches (76.2 x 38.1 cm)
Ed. 68/100
Signed & editioned on storage container
(RAY 28)



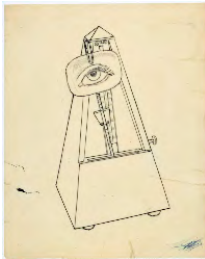
Man Ray
Lèvres d'Or ["Golden Lips"]
Jean Petithory, Paris, 1967
Mixed media assemblage (book, leather,
mirror & chain)
15 x 10 x 3 inches (38.1 x 25.4 x 7.6 cm)
Ed. VI/VII
Signed on interior
(RAY 29)



Man Ray
Motif Perpétuel ["Perpetual Motif"]
Il Fauno, Turin, 1970-71
Mixed media (metronome & hologram)
9 x 4 1/2 inches (22.9 x 11.4 cm)
Ed. 40/40
Signed & editioned on underside
(RAY 38)



Man Ray
Motif Perpétuel ["Perpetual Motif"]
Il Fauno, Turin, 1970-71 (after the original
Object to be Destroyed, 1923)
Metronome & photograph
9 x 4 1/2 inches (22.9 x 11.4 cm)
Ed. 32/40
Signed & editioned on underside
(RAY 31)



Man Ray
Object to be Destroyed
ca. 1942
Pencil & ink on tracing paper
10 1/4 x 8 1/4 inches (26.3 x 20.9 cm)

(RAY 40)



Man Ray
*Objet trouvé / Objet non-euclidien I ["Found
Object / Non-Euclidean Object I"]*
1973, variant edition by Binder, Brussel &
Lucien Treillard
Mixed media assemblage (wood, steel, rubber
tube & silver)
3 3/4 x 9 3/8 x 18 1/2 inches (9.5 x 23.8 x 47
cm)
Edition of 8
(RAY 39)



Man Ray
Phare de la Harpe
1967
Readymade object (iron)
6 3/4 x 3 3/4 x 4 inches (17.1 x 9.5 x 10.2
cm)
Edition of 50
Signed, titled & dated on face
(RAY 27)



Man Ray

Proverbe ["Proverb"]

1973, (after the original 1944 object)

Mixed media (obelisk with knitting needle
mounted on wood base)

13 x 6 x 6 inches (33 x 15.2 x 15.2 cm)

Edition of 9

Stamped "Man Ray" & numbered "EA" / Signed
& titled on base

(RAY 36)



Man Ray

Soleil de nuit / Abandoned Playground

1943

Oil on canvas

20 x 24 inches (50.8 x 61 cm)

Signed on recto

(RAY 34)



Man Ray

Untitled (Object with No Title and No Date)

n.d.

Unique mixed media assemblage

22 1/4 x 7 x 7 inches (56.5 x 17.8 x 17.8 cm)

(RAY 30)



Rudolf Schlichter

Überfall im Bordell ["Assault in the Brothel"]

ca. 1919-1920

Watercolor on paper

9 5/8 x 13 9/16 inches (24.5 x 34.5 cm)

(SCHL 6)



Wols (Alfred Otto Wolfgang Schulze)

Pavilion de l'elegance (Madeleine Vionnet)

["Pavilion of Elegance"]

1937

Vintage gelatin silver print

11 3/8 x 7 inches (28.9 x 17.8 cm)

Artist's stamp on verso

(WOLS 4)



Wols (Alfred Otto Wolfgang Schülze)
Pavilion de l'elegance ["Pavilion of Elegance"]

1937
Vintage gelatin silver print
11 5/8 x 9 1/4 inches (29.5 x 23.5 cm)
Artist's stamp with inscription "exposition
1937" in pencil on verso
(WOLS 8)



Kurt Schwitters
Mz 2014 / Kommt überhaupt nicht in Frage
["Completely Out of the Question"]

1924
Collage (catalogue raisonné #1229, p. 105)
9 x 6 1/2 inches (22.9 x 16.5 cm)
Signed, titled & dated on recto
(SCHW 9)



Kurt Schwitters
Two Stones in Rhythm
1947

Pencil on lined paper (catalogue raisonné
#3652, p. 664)
7 1/2 x 5 1/8 inches (19.2 x 13.2 cm)
Signed, dated & titled on recto
(SCHW 89)



Victor Servranckx
Untitled
1920-26

Gouache on paper
11 3/8 x 16 1/8 (29 x 41 cm)
Artist's stamp with authentication by wife on
verso
(SERV 16)



Jindřich Štyrský
Alabastrová ručička ["Little Alabaster Hand"]
1940

Pencil frottage & collage on paper
8 5/8 x 11 3/4 inches (21.9 x 29.8 cm)
Signed & dated in pencil on recto
(STYR 80)



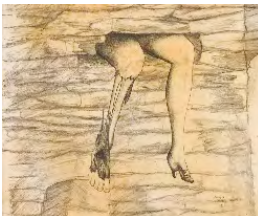
Jindřich Štyrský
Kresba k Čerchovu ["Drawing to Čerchov"]
1934
Pencil frottage on paper
10 1/2 x 6 7/8 inches (26.8 x 17.4 cm) - by sight
Signed & dated on recto
(STYR 91)



Jindřich Štyrský
L'inspiration ["Inspiration"]
From the series Stěhovaci Kabinet ["Vanity Case"]
1934
Collage
10 x 13 5/8 inches (25.4 x 34.6 cm)
Signed & dated in pencil with "Succession Toyen" stamp on recto of mount
(STYR 89)



Jindřich Štyrský
La Statue de la liberté ["The Statue of Liberty"]
(from Stěhovaci Kabinet ["Vanity Case"])
1934
Collage
9 1/4 x 9 5/8 inches (23.5 x 24.4 cm)
(STYR 86)



Jindřich Štyrský
Sen o opuštěném domě ["Dream about a Derelict House"]
1940
Pencil on paper
9 x 11 inches (23 x 28 cm) - by sight
Signed & dated on recto
(STYR 92)



Jindřich Štyrský
Untitled
1935
Collage (original art for illustration in *Veřejná ruže* ["The Public Rose"]. by Paul Eluard)
4 3/8 x 7 inches (11.1 x 17.8 cm)
Signed in ink on recto
(STYR 85)



Jindřich Štyrský
Untitled
1940
Collage
5 1/2 x 12 inches (14 x 30.5 cm)
Signed & dated in ink on recto
(STYR 87)



Jindřich Štyrský
Untitled
From the series Stěhovaci Kabinet ["Vanity Case"]
1934
Collage
10 3/8 x 7 5/8 inches (26.4 x 19.4 cm)
Signed & dated in pencil on recto
(STYR 88)



Jindřich Štyrský
Untitled (from Stěhovaci Kabinet ["Vanity Case"])
1934
Collage
9 1/8 x 6 1/8 inches (23.2 x 15.6 cm)
Signed & dated in pencil with "Succession Toyen" stamp on recto of mount
(STYR 90)



Stanislaw Ignacy Witkiewicz
Artur Rubinstein I
1913
Vintage gelatin silver print
6 7/8 x 5 inches (17.5 x 12.7 cm)
(WITK 70)



Stanislaw Ignacy Witkiewicz
Maria Witkiewicz
1912
Vintage gelatin silver print
4 7/8 x 6 7/8 inches (12.5 x 17.5 cm)
(WITK 103)



Stanislaw Ignacy Witkiewicz
Self-portrait
ca. 1910
Vintage gelatin silver print
4 3/4 x 3 1/2 inches (12 x 8.9 cm)
(WITK 67)



Stanislaw Ignacy Witkiewicz

Tadeusz Langier

1912-1913

Vintage gelatin silver print

6 3/4 x 4 5/8 inches (17.1 x 11.7 cm)

Collector's stamp on verso
(WITK 3)



Unica Zürn

"Bibi, ist eine welsche Hexe!" (original drawing for *Hexen Texte* ["Witches Text"], p. 9)

1953

Ink on paper (torn drawing reassembled by Hans Bellmer)

6 1/8 x 5 7/8 inches (15.7 x 14.7 cm)

Signed & dated on recto / Stamped on verso
(ZURN 6)



Unica Zürn

Untitled

1965

Ink & gouache on paper

25 5/8 x 19 3/4 inches (65 x 50 cm)

Signed & dated on recto / Drawing on verso
(ZURN 134)



Unica Zürn

Untitled

1966

Ink on paper

11 x 7 5/8 inches (28 x 19.5 cm)▫

Signed & dated on recto
(ZURN 12)



Unica Zürn

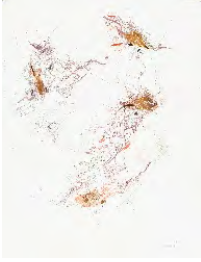
Untitled

1966

Ink on paperboard

15 x 9 7/8 inches (38 x 25 cm)▫

Signed & dated on recto
(ZURN 13)



Unica Zürn
Untitled
Île de Réi, 1963
Collage & gouache on paper
25 1/4 x 19 5/8 inches (64 x 50 cm)
Signed & dated on recto
(ZURN 133)



Unica Zürn
Untitled
Paris, 1963
Ink on paper
25 1/2 x 19 1/2 inches (64.8 x 49.5 cm)
Signed & dated on recto / Drawing on verso
(ZURN 15)



Unica Zürn
Untitled
1967
Ink on paper
8 1/8 x 10 3/8 inches (21 x 27 cm)
(ZURN 8)