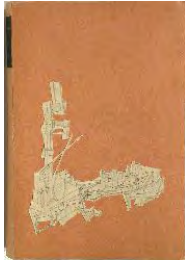


ubu



Hans Bellmer

Carnets de Croquis ["Sketchbooks"]

ca. 1936-1938

Eight (8) sketchbooks containing 220 pencil drawings (some with colored pencil, watercolor or pastel) enclose in an original wrapper

Each approximately 6 1/4 x 4 1/2 inches (15.9 x 11.4 cm)

Signed & titled on wrapper / Dated on six (6) sketchbook covers & signed on two (2) (BELL 180)



Hans Bellmer

La Poupée ["The Doll"]

1935 (printed 1936)

Vintage gelatin silver print mounted off center on buff paper

15 1/2 x 5 5/8 inches (39.4 x 14.3 cm)

Certificate of Georges Hugnet on verso (BELL 12)



Hans Bellmer

La Poupée ["The Doll"]

1935 (printed 1938 or earlier)

Hand-colored vintage gelatin silver print

8 3/4 x 7 3/8 inches (22.3 x 18.7 cm)

(BELL 223)



Hans Bellmer
La Poupée ["The Doll"]
1934
Vintage gelatin silver print
7 x 6 inches (18 x 15.5 cm)
Blind stamp applied by the artist's estate
(BELL 5)



Hans Bellmer
La Poupée ["The Doll"] (p. 82, lower left)
1935
Vintage gelatin silver print
9 3/8 x 9 1/4 inches (23.9 x 23.6 cm)
(BELL 21)



Hans Bellmer
Marseille
1932
Oil on panel
21 1/4 x 25 1/2 inches (54 x 65 cm)
Signed & dated on recto
(BELL 413)



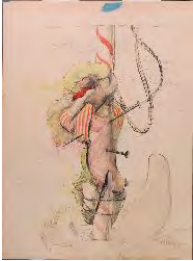
Hans Bellmer
Untitled
1949
Pencil & ink on paper
7 1/8 x 4 3/8 inches (18.1 x 11.1 cm)
Signed & dated "49" in pencil on recto
(BELL 411)



Hans Bellmer
Untitled
1961
Pencil on paper
10 1/2 x 8 1/4 inches (26.7 x 21 cm)
Signed & dated on recto
(BELL 407)



Hans Bellmer
Untitled
ca. 1934
White gouache on black paper
11 1/2 x 8 3/4 inches (29.2 x 22.2 cm)
Initialed in heart on recto
(BELL 273)



Hans Bellmer
Untitled
ca. 1934
Ink & watercolor on paper
12 5/8 x 9 3/8 inches (32 x 23.9 cm)
29 1/4 x 10 7/8 x 33 1/4 inches (74.3 x 27.6 x 84.5 cm)
(BELL 282)



Hans Bellmer
Untitled
(Jeune fille bicéphale assise) ["Seated Double-headed Girl"]
ca. 1934
White gouache on black paper affixed to black paper mount
12 7/8 x 9 3/4 inches (32.7 x 24.8 cm) - image
20 1/4 x 15 inches (51.4 x 38.1 cm) - mount
Signed & dedicated "pour Lizica Codreano" on recto / Drawing on verso
(BELL 287)



Hans Bellmer
Untitled (Pelvis-Eyes-Ears)
1959
Pencil & white gouache on paper
13 x 19 1/4 inches (33 x 48.9 cm) - sheet
Signed & dated on recto
(BELL 165)



Hans Bellmer
Untitled (study for a print for Joyce Mansour's Jules César)
1955
Pencil on paper
5 3/4 x 2 5/8 inches (14.6 x 6.7 cm) - image
7 1/2 x 4 1/4 inches (19.1 x 10.8 cm) - sheet
Signed & dated on recto
(BELL 398)



Hans Bellmer

Untitled (study for Mme. Edwarda)

1955

Pencil on paper

7 1/4 x 3 1/4 inches (18.5 x 8.3 cm) - image

8 1/8 x 5 1/4 inches (20.8 x 13.4 cm) - sheet

Signed & dated on recto

(BELL 291)



Hans Bellmer

Untitled (study for Mme. Edwarda)

1955

Pencil on paper on original mount

8 1/4 x 4 1/8 inches (21 x 10.5 cm)

Signed on recto

(BELL 404)



Hans Bellmer

Untitled (variant of the drawing for Les Marionnettes [1969])

1958

Oil, gouache & pencil on canvas

6 1/4 x 4 3/4 inches (15.9 x 12.1 cm)

Signed & dated on verso at top of stretcher bar

(BELL 412)



Claude Cahun

Les mains ["Hands"]

Nantes, 1939

Vintage gelatin silver print

9 7/8 x 7 3/4 inches (25.1 x 19.7 cm)

Signed, dated & annotated 'Un monstre hors de jeu, une île de miroirs... Claude' in ink with partial credit label on verso

(CAHU 41)



Claude Cahun

Rendent hélas éternels ["Alas, Rendered Eternals"]

ca. 1936

Vintage gelatin silver print mounted on brown stock

7 x 5 inches (17.8 x 12.7 cm) - image

11 5/8 x 8 3/4 inches (29.5 x 22.2 cm) - mount

Titled on recto / Signed on verso

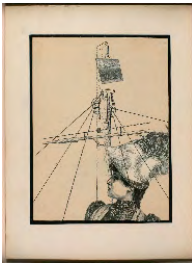
(CAHU 17)



Claude Cahun
Untitled (jawbone on a tray with objects)
ca. 1936
Vintage gelatin silver print
4 5/8 x 4 5/8 inches (11.7 x 11.7 cm) - image
7 x 4 7/8 inches (17.8 x 12.4 cm) - sheet
(CAHU 27)



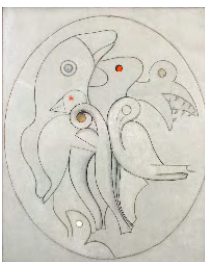
Claude Cahun
Untitled (variant of Je Parle par cœur & Le Cœur de pic)
1936
Vintage gelatin silver print
7 1/8 x 5 1/8 inches (18.1 x 13 cm)
(CAHU 28)



Joseph Cornell
Untitled
1930s
Collage
10 1/8 x 7 3/8 inches (27.6 x 18.7 cm)
(CORN 27)



Joseph Cornell
Untitled
1930s
Collage
9 7/8 x 7 3/8 inches (25.1 x 18.7 cm)
(CORN 28)



Max Ernst
A l'interieur de la vue
1929
Oil on canvas
39 1/2 x 31 7/8 inches (100.3 x 81 cm)
Signed on recto (catalogue raisonné #1575)
(MERN 7)



Georges Hugnet

Le retour au passé ["The Return to the Past"]

1936

Collage of decalcomania (ink wash) & halftone cut-outs on board

9 3/4 x 14 7/8 inches (24.8 x 37.8 cm)

Signed & dated on recto
(HUGN 6)



Georges Hugnet

Tout en elle était sourire ["While She Was Smiling"]

Page inédite for La Septième face du dé ["The Seventh Side of the Die"]

1936

Collage

12 5/8 x 9 7/8 inches (32.1 x 25.1 cm)

Inscribed #38 upper right / Certificate of Myrtille Hugnet (1997)

(HUGN 42)



Georges Hugnet

Untitled (from *La Vie amoureuse des Spumifères*)

ca. 1948

Gouache on vintage post card (ca. 1920)

5 1/2 x 3 1/2 inches (14 x 8.9 cm)

Photo-certificate of Myrtille Hugnet
(HUGN 1)



Dora Maar

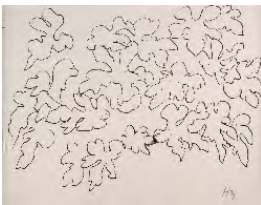
Portrait of Picasso

1938

Oil & ripolin on canvas

19 5/8 x 25 5/8 inches (49.8 x 65.1 cm)

(MAAR 1)



Henri Matisse

Feuilles ["Leaves"]

1941

Ink on paper

8 x 11 inches (20.3 x 27.9 cm)

Initialed in pencil on recto

(MATI 2)



**(Roberto Sebastián Antonio Matta
Echaurren) Matta**
Untitled (from The Birth of the Twins)
1943

Graphite pencil & colored crayons on paper
10 3/8 x 6 3/8 inches (26.4 x 16.2 cm)
(MATT 2)



Francis Picabia
Source des Evangiles / Calculs et Documents
1920

Ink on invitation card
4 5/8 x 3 1/2 inches (11.7 x 8.9 cm)
Authenticated by the Comité Picabia (2005)
(PICA 9)



Pablo Picasso
Le Mariage de Paul et Dominique Eluard
Drawing on a page from a copy of De
Mémoire d'homme by Tristan Tzara
June 15, 1951

Colored pencil & watercolor on paper
12 3/4 x 9 3/4 inches (32.4 x 24.6 cm)
Signed, dated & annotated "St. Tropez" on
recto
(PPIC 4)



Jindřich Štyrský
Kresba k Čerchovu ["Drawing to Čerchov"]
1934

Pencil frottage on paper
10 1/2 x 6 7/8 inches (26.8 x 17.4 cm) - by
sight
Signed & dated on recto
(STYR 91)



Jindřich Štyrský
La Statue de la liberté ["The Statue of
Liberty"]
(from Stěhovaci Kabinet ["Vanity Case"])
1934

Collage
9 1/4 x 9 5/8 inches (23.5 x 24.4 cm)
(STYR 86)



Jindřich Štyrský

Přísaha ["Oath"]

1936

Collage

Original art for an illustration in *Ani labut', ani Lúna* by Karel Hynek Mácha

8 x 11 3/4 inches (20.3 x 29.8 cm)

(STYR 84)



Jindřich Štyrský

Sen o opuštěném domě ["Dream about a Derelict House"]

1940

Pencil on paper

9 x 11 inches (23 x 28 cm) - by sight

Signed & dated on recto

(STYR 92)



Jindřich Štyrský

Untitled (from Stěhovaci Kabinet ["Vanity Case"])

1934

Collage

9 1/8 x 6 1/8 inches (23.2 x 15.6 cm)

Signed & dated in pencil with "Succession Toyen" stamp on recto of mount

(STYR 90)



Jindřich Štyrský

Žena zamrzlá v ledu I ["Woman Frozen in Ice I"]

1939

India ink on paper

15 5/8 x 16 3/8 inches (39.7 x 41.6 cm) - by sight

Signed & dated in pencil with "Succession Toyen" stamp on recto

(STYR 83)



Yves Tanguy

Le Col de l'hirondelle ["The Pass of the Swallow"]

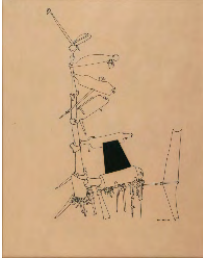
1934

Oil on panel

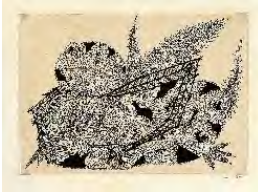
18 x 14 3/4 inches (45.7 x 37.5 cm)

Signed & inscribed "mon ami de toujours Paul Eluard" on recto

(TANG 8)



Yves Tanguy
Untitled
1953
Ink & collage on paper
13 1/4 x 10 1/4 inches (33.7 x 26 cm) - by sight
Signed & dated on recto
(TANG 5)



Unica Zürn
Alle guten Geister! (original drawing for *Hexen Texte* ["Witches Text"], p. 5)
1954
Ink on paper cornered into original mat
6 1/8 x 9 inches (15.7 x 22.8 cm) - image
Signed on recto
(ZURN 127)



Unica Zürn
"Bibi, ist eine welsche Hexe!" (original drawing for *Hexen Texte* ["Witches Text"], p. 9)
1953
Ink on paper (torn drawing reassembled by Hans Bellmer)
6 1/8 x 5 7/8 inches (15.7 x 14.7 cm)
Signed & dated on recto / Stamped on verso
(ZURN 6)



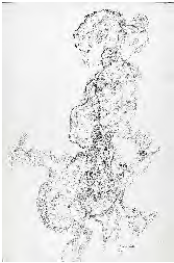
Unica Zürn
Untitled
1960s
Ink, gouache & watercolor on paper
19 1/2 x 25 1/2 inches (49.5 x 64.8 cm)
Signed on recto
(ZURN 135)



Unica Zürn
Untitled
1965
Ink & gouache on paper
25 5/8 x 19 3/4 inches (65 x 50 cm)
Signed & dated on recto / Drawing on verso
(ZURN 134)



Unica Zürn
Untitled
1966
Ink on paper
11 x 7 5/8 inches (28 x 19.5 cm)
Signed & dated on recto
(ZURN 12)



Unica Zürn
Untitled
1966
Ink on paperboard
15 x 9 7/8 inches (38 x 25 cm)
Signed & dated on recto
(ZURN 13)



Unica Zürn
Untitled
1967
Ink on paper
8 1/4 x 10 5/8 inches (21 x 27 cm)
Drawing on verso
(ZURN 129)



Unica Zürn
Untitled
ca. 1960
Ink on paper (torn drawing reassembled by
Hans Bellmer)
5 5/8 x 7 7/8 inches (14.5 x 20 cm)
Signed on recto
(ZURN 128)



Unica Zürn
Untitled
Île de Réi, 1963
Collage & gouache on paper
25 1/4 x 19 5/8 inches (64 x 50 cm)
Signed & dated on recto
(ZURN 133)



Unica Zürn
Untitled
Paris, 1957
Oil on paper mounted on wood
16 1/8 x 12 1/8 inches (40.9 x 30.8 cm)
Signed & dated on recto
(ZURN 131)



Unica Zürn
Untitled
Paris, 1963
Ink on paper
25 1/2 x 19 1/2 inches (64.8 x 49.5 cm)
Signed & dated on recto / Drawing on verso
(ZURN 15)



Unica Zürn
Untitled
1967
Ink on paper
8 1/8 x 10 3/8 inches (21 x 27 cm)
(ZURN 8)