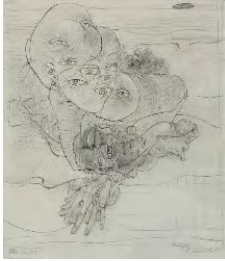


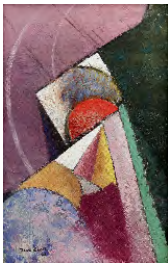
ubu



**Hans Bellmer**  
*Untitled (Study for "Les Yeux")*  
Ile de Ré, August 4, 1961  
Graphite on paper  
7 3/4 x 6 3/4 inches (19.7 x 17.1 cm)  
Signed & dated on recto  
(BELL 424)



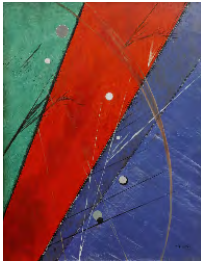
**Victor Brauner**  
*Erotomagie préliminaire*  
1948  
Oil on canvas  
28 3/4 x 36 1/8 inches (73 x 92 cm)  
Signed, dated, titled & inscribed on recto  
(VBRA 28)



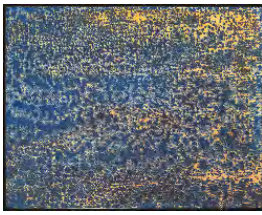
**Jean Crotti**  
*Formes*  
1928  
Oil on canvas  
22 x 14 1/4 inches (55.9 x 36.2 cm)  
Signed & dated on recto  
(CROT 7)



**Jean Crotti**  
*La Reine ["The Queen"]*  
1927  
Oil on canvas mounted on board  
15 3/4 x 15 inches (40 x 38.1 cm)  
Signed on recto / Signed, titled & dated  
on verso  
(CROT 6)



**Jean Crotti**  
*Peinture Tabu*  
1922  
Oil on canvas  
36 3/8 x 28 1/4 inches (92.4 x 71.8 cm)  
Signed & dated on recto  
(CROT 5)



**Max Ernst**  
*Arizona*  
1966  
Oil on canvas mounted on board  
7 1/4 x 9 1/8 inches (18.4 x 23.2 cm)  
(MERN 49)



**Max Ernst**  
*Fleurs coquillages ["Shell Flowers"]*  
ca. 1928  
Gouache on paper  
9 1/8 x 14 1/8 inches (23.2 x 35.9 cm)  
Signed on recto & inscribed on verso  
(MERN 50)



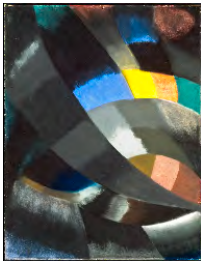
**Max Ernst**  
*La Peinture et la lumiere ["Painting & light"]*  
1968  
Oil on canvas  
39.37 x 31.89 inches (100 x 81 cm)  
(MERN 51)



**Max Ernst**  
*Le tombeau du poète: Après moi le sommeil* ["The Poet's Grave: After Me, Sleep"]  
1958  
Oil on canvas  
25 5/8 x 21 1/4 inches (65 x 54 cm)  
Signed on recto  
(MERN 48)



**Max Ernst**  
*Sentiments Mélés* ["Mixed feelings"]  
1923  
Oil on canvas  
18.9 x 23.43 inches (48 x 59.5 cm)  
(MERN 52)



**Otto Freundlich**  
*Schiff im Sturm* ["Ship in a Storm"]  
1924  
Pastel on paper  
25 1/8 x 19 3/8 inches (64 x 49 cm)  
Initialed on recto  
(FREU 2)



**Carl Grossberg**  
*Jacquard-Webereien* ["Textile Plant"]  
1934  
Oil on panel  
19 5/8 x 15 3/4 inches (50 x 40 cm)  
Signed, initialed & dated on recto  
(CGRO 6)



**George Grosz**  
*Kinderbegräbnis* ["Children's Funeral"]  
ca. 1918  
Ink on paper  
18 1/8 x 23 1/4 inches (46 x 59 cm)  
Signed on recto  
(GROS 7)



**David Hare**  
Untitled  
ca. 1942  
Vintage gelatin silver print from a heat-  
altered negative ("brulage")  
7 1/4 x 9 3/8 inches (18.4 x 23.8 cm) -  
image  
(HARE 1)



**David Hare**  
Untitled  
ca. 1942  
Vintage gelatin silver print from a heat-  
altered negative ("brulage")  
9 1/4 x 7 5/8 inches (23.5 x 19.4 cm) -  
image  
(HARE 2)



**David Hare**  
*Untitled (from "VVV Portfolio")*  
ca. 1942  
Toned vintage gelatin silver print from a  
heat-altered negative ("brulage")  
11 7/8 x 9 3/4 inches (30.2 x 24.8 cm) -  
image  
17 7/8 x 13 7/8 inches (45.4 x 35.2 cm) -  
mount  
Signed on recto  
(HARE 4.1)



**Raoul Hausmann**  
*Profil, hut und schuhe ["Profile, hat &  
shoes"]*  
2 September, 1921  
Ink on paper  
17 3/8 x 13 3/4 inches (44 x 35 cm)  
Signed & dated on recto  
(HAUS 1)



**Auguste Herbin**  
*Femme au Cerisier ["Woman with Cherry  
Tree"]*  
1924  
Oil on canvas  
45 5/8 x 35 inches (116 x 89 cm)  
(HERB 2)



**Hannah Höch**  
*Hochfinanz ["High Finance"]*  
1923  
Collage on paper  
14 1/8 x 12 1/8 inches (36 x 31 cm)  
Signed, dated & inscribed "Für Moholy-Nagy von Hannah Höch" on recto  
(HOCH 1)



**Boris Klinch**  
*Against Bureaucracy*  
1933  
Lithograph on paper  
31 1/8 x 20 1/2 inches ((79 x 52.1 cm)  
Signed & dated on recto  
(KLIN 1)



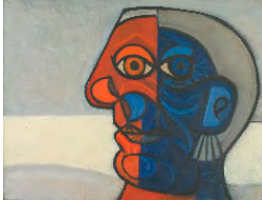
**Valentina Kulagina**  
*For the Defense of the USSR*  
1930  
Lithograph on paper  
35 3/8 x 25 1/4 inches (89.9 x 64 cm)  
(KULA 1)



**Louise (Lou) Loeber & Dirk Koning**  
*Untitled (Astroloog)*  
ca. 1925  
Gouache on paper  
27 1/8 x 20 5/8 inches (68.9 x 52.4 cm)  
Hand-stenciled by the artists  
(LOEB 24)



**Louise (Lou) Loeber & Dirk Koning**  
*Untitled (Expositie Laren Leeszaal)*  
ca. 1925  
Gouache on paper  
25 1/2 x 19 1/4 inches (64.8 x 48.9 cm)  
Hand-stenciled by the artists  
(LOEB 23)



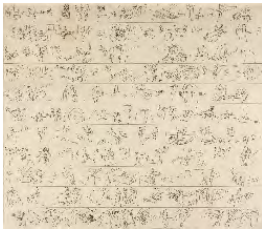
**Dora Maar**  
*Portrait of Picasso*  
1938  
Oil & ripolin on canvas  
19 5/8 x 25 5/8 inches (49.8 x 65.1 cm)  
(MAAR 1)



**(Roberto Sebastián Antonio Matta Echaurren) Matta**  
*El Sol Tambien*  
1950  
Pencil & wax crayon on paper  
Triptych  
6 1/2 x 31 1/8 inches (16.5 x 79.1 cm)  
Signed & titled on recto (estate #D50/5)  
(MATT 4)



**(Roberto Sebastián Antonio Matta Echaurren) Matta**  
*Les 120 journées de Sodome*  
1944  
Crayon & pencil on board  
11 5/8 x 14 5/8 inches (29.5 x 37 cm)  
Estate #D44/25  
(MATT 7)



**(Roberto Sebastián Antonio Matta Echaurren) Matta**  
*Study for "No Lo Sabia"*  
ca. 1976  
Pen & ink on paper  
16 3/4 x 20 inches (42.5 x 50.8 cm)  
(MATT 6)



**(Roberto Sebastián Antonio Matta Echaurren) Matta**  
Untitled  
1951  
Pencil, crayon & pastel on paper  
13 3/4 x 19 1/2 inches (34.9 x 49.5 cm)  
Inscribed "L'arbol" on recto  
(MATT 5)



**László Moholy-Nagy**

*Vertical Black, Red, Blue*

1945

Polychrome & incised Plexiglass

16 3/4 x 12 x 5 inches (42.5 x 30.5 x 12.7 cm) - varies throughout

Signed & dated

(MOHO 35)



**Oskar Nerlinger**

Untitled

Berlin, 1915

Ink & colored pencil on paper

8 7/8 x 5 5/8 inches (22.4 x 14.2 cm)

Inscribed & dated on recto

(NERL 5)



**Wolfgang Paalen**

Untitled

1945

Pen & India ink on amate paper

19 1/2 x 12 1/2 inches (49.5 x 31.8 cm)

(PAAL 1)



**Francis Picabia**

*Deux Visages ["Two Faces"]*

ca. 1936-1938

Oil on canvas

21 1/4 x 22 inches (54 x 56 cm)

(PICA 10)



**Man Ray**

*Trompe l'oeuf*

1930-1963

Mixed media (vintage photograph & toilet seat mounted on masonite)

23 5/8 x 19 3/4 inches (60 x 50 cm)

Ed. 9/10

Signed, titled & editioned on recto

(RAY 41)



**Hans Richter**

*Study for the book by Emmy Hennings  
"Das gefängnis" ["The Prison"]*

1917

Pencil on paper

10 7/8 x 8 5/8 inches (27.7 x 22 cm)

Initialed & dated on recto

(RICH 8)



**Rudolf Schlichter**

*Dachluke ["Escape Hatch"]*

ca. 1919

Ink & white gouache on paper

21 3/8 x 18 1/4 inches (54 x 46 cm)

Signed, estate stamp & titled on verso

(SCHL 2)



**Rudolf Schlichter**

*Passanten und Reichswehr ["Passers and  
Rich Military"]*

1925-26

Watercolor on paper

22 7/8 x 15 3/4 inches (58.1 x 40 cm)

(SCHL 7)



**Arthur Segal**

*Interieur mit Blickpunkt Stuhl III*

1928

Oil on panel

20 x 26 3/4 inches (51 x 68 cm)

24 3/8 x 28 1/2 x 3/4 inches (61.9 x 72.4  
x 1.9 cm)

24 3/8 x 28 1/2 x 1 1/2 inches (61.9 x  
72.4 x 3.8 cm) 20.08 x 26.77 inches (51  
x 68 cm)

24 3/8 x 28 1/2 x 2 inches (61.9 x 72.4 x  
5.1 cm) 20.08 x 26.77 inches (51 x 68  
cm)

Signed & dated on recto

(SEGA 3)





**Lazar Segall**  
*Portrait of Fritz Glaser*  
ca. 1922  
Brown chalk on paper  
17 3/8 x 13 3/4 inches (44 x 35 cm)  
Signed on recto  
(LSEG 1)



**Kurt Seligmann**  
*L'Oeil ganté de noir*  
From the series "Une Ecriture lisible" ["Legible Handwriting"]  
1938  
Pencil & India ink on paper  
ca. 25 1/2 x 19 inches (64.8 x 48.3 cm) - image  
65 x 50 inches (165.1 x 127 cm) - sheet  
Signed, dated, titled & inscribed on recto  
(SELI 4)



**Kurt Seligmann**  
*Quand je la rencontrai* ["When I Met Her"]  
From the series "Une Ecriture lisible" ["Legible Handwriting"]  
1938  
Pen & India ink on paper  
ca. 25 1/2 x 19 inches (64.8 x 48.3 cm) - image  
65 x 50 inches (165.1 x 127 cm) - sheet  
Signed, dated, titled & initialed on recto  
(SELI 3)



**Kurt Seligmann**  
*The Gathering*  
1943  
Oil on board  
23 x 61 inches (58.4 x 154.9 cm)  
Signed on recto  
Titled on verso  
(SELI 6)



**Georgii & Vladimir Stenberg**  
*Moskauer Kamerny Theater*  
1923  
Lithograph on paper  
20 7/8 x 13 3/4 inches (53.1 x 35.1 cm)  
(STEN 5)



**Yves Tanguy**  
*Tes Bougies bougent* ["Your Tapers Taper"]  
1929  
Oil on canvas  
28 3/4 x 36 1/4 inches (73 x 92 cm)  
Signed & dated on recto  
(TANG 9)



**Unica Zürn**  
Untitled  
1960s  
Ink, gouache & watercolor on paper  
19 1/2 x 25 1/2 inches (49.5 x 64.8 cm)  
Signed on recto  
(ZURN 135)



**Unica Zürn**  
*Zirkus* ["Circus"]  
1956  
Oil & incising on canvas  
19 5/8 x 18 3/8 inches (49.8 x 46.8 cm)  
Signed & dated on recto  
(ZURN 132)