

FIAC LIST

1.



Hans Bellmer

La Poupée

["The Doll"]

1935 (printed 1938 or earlier)

Hand-colored vintage gelatin silver contact print affixed to original mount
2 1/4 x 2 1/8 inches (5.7 x 5.4 cm) -
image

(BELL 203)

Location: W2-C

Installation: FD: 16 1/4 x 13 1/4 x 1

2.



Hans Bellmer

La Poupée

["The Doll"]

1935 (printed 1938 or earlier)

Vintage gelatin silver contact print
mounted on pink stock
2 1/8 x 2 1/8 inches (5.4 x 5.4 cm) -
image

(BELL 211)

Location: W2-D

3.



Hans Bellmer

La Poupée

["The Doll"]

1935 (printed 1938 or earlier)

Vintage gelatin silver contact print
mounted on pink stock
2 1/8 x 2 1/8 inches (5.4 x 5.4 cm) -
image

(BELL 212)

Location: W2-D

10/2/2014

4.



Hans Bellmer

La Poupée

["The Doll"]

1935 (printed 1938 or earlier)

Hand-colored vintage gelatin silver contact print ☒ affixed to original mount

2 1/8 x 2 1/8 inches (5.4 x 5.4 cm) -

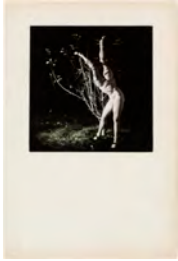
image

(BELL 217)

Location: W2-C

Installation: FD: 16 1/4 x 13 1/4 x 1

5.



Hans Bellmer

La Poupée

["The Doll"]

1935 (printed 1938 or earlier)

Hand-colored vintage gelatin silver contact print ☒ affixed to original mount

2 1/4 x 2 1/4 inches (5.7 x 5.7 cm) -

image

(BELL 218)

Location: W2-C

Installation: FD: 16 1/4 x 13 1/4 x 1

6.



Hans Bellmer

La Poupée

["The Doll"]

1935

Vintage gelatin silver print

2 1/2 x 2 1/4 inches (6.3 x 5.7 cm)

(BELL 247)

Location: FF 1

7.



Hans Bellmer

La Poupée

["The Doll"]

1935

Vintage gelatin silver print

2 1/2 x 2 3/8 inches (6.3 x 6 cm)

(BELL 249)

Location: FF 1

8.



Hans Bellmer

La Poupée

["The Doll"]

1935

Vintage gelatin silver print

2 1/2 x 2 1/4 inches (6.3 x 5.7 cm)

(BELL 261)

Location: FF 1

9.



Hans Bellmer

La Poupée

["The Doll"]

1935

Vintage gelatin silver print

2 5/8 x 2 3/8 inches (6.7 x 6 cm)

(BELL 263)

Location: FF 1

10.



Hans Bellmer

Untitled

1958

Pencil & white gouache on paper

15 1/8 x 11 5/8 inches (38.4 x 29.5 cm)

Signed & dated on recto

(BELL 465)

Location: W1-B

11.



Hans Bellmer

La Poupée

["The Doll"]

1937

Vintage gelatin silver print on Agfa

Brovira paper

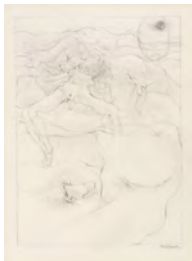
11 1/2 x 11 3/8 inches (29.2 x 28.9 cm)

(BELL 470)

Location: W1-B

Installation: FD 26 x 26 x 1 1/2

12.



Hans Bellmer

Study for "A Sade"

1960-1961

Pencil on paper

7 3/4 x 5 3/4 inches (19.7 x 14.6 cm) -

image

10 5/8 x 8 1/4 inches (27 x 21 cm) -

sheet

Signed on recto / Drawing on verso

(BELL 472)

Location: W2-C

Installation: FD: 16 1/4 x 13 1/4 x 1

13.



André Breton

Cadavre Exquis (André Breton, Paul

Eluard & Valentine Hugo)

ca. 1930

Pastel on paper

11 7/8 x 8 2/3 inches (30 x 22 cm)

Inscribed "Eluard, Hugo" on verso

(BRET 37)

Location: W2-D

14.



Leonora Carrington

Devinez-moi

1957

Varnished gouache on board
4 5/8 x 3 1/8 inches - by sight

Signed on recto

(CART 4)

Location: H2-B

15.



Leonora Carrington

Solar Megalomania

1957

Varnished gouache on board
4 1/2 x 2 7/8 inches (11.4 x 7.3cm) - by sight

Signed on recto

(CART 5)

Location: H2-B

16.



René Clair

L'Entracte

ca. 1925

Vintage gelatin silver print
4 7/8 x 6 7/8 inches (12.5 x 17.5 cm)

Signed on recto / Notes on verso

(CLAI 1)

Location: W2-F

17.

Salvador Dalí

Saint Georges et le dragon

1962

Ballpoint pen on paper

22 3/4 x 30 1/2 inches (57.8 x 77.5cm)

Signed & dated "Gala Dalí 1962" on recto
(DALI 4)

18.



Jean Dubuffet

Jardin d'automne

Sept. 1959

Collage, leaves & botanical elements

13 x 19 7/8 inches (33 x 50.5 cm)

Signed and dated on recto

(DUBU 1)

Location: H2-K

19.

Jean Dubuffet

La vie à la campagne






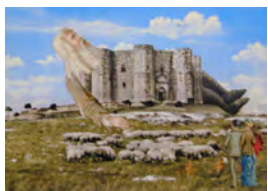
June 6, 1944

Gouache & China ink on newsprint

8 1/4 x 10 inches (21 x 25.4cm)

Signed & dated "28 VI 44"

(DUBU 2)

20.  **Jindrich Heisler**
Untitled ("Object")
1943
Vintage gelatin silver print
11 x 7 5/8 inches (27.9 x 19.4 cm)
Signed, inscribed & dated by Toyen on verso
(HEIS 12)
Location: W2-C
21.  **Georges Hugnet**
Le retour au passé
["The Return to the Past"]
1936
Collage of decalcomania (ink wash) & halftone cut-outs on board
9 3/4 x 14 7/8 inches (24.8 x 37.8 cm)
Signed & dated on recto
(HUGN 6)
Location: FF 4
22.  **(Roberto Sebastián Antonio Matta Echaurren) Matta**
Untitled
(Study for *How Ever*)
ca. 1947
Pencil & colored pencil on paper
19 x 26 1/2 inches (48.3 x 67.3 cm)
(MATT 9)
Location: H2-E
23.  **Joan Miro**
Le numéro de music-hall
November 10, 1938
Gouache & pencil on cardboard
Signed on recto / Signed, dated & inscribed on verso
(MIRO 5)
24.  **Richard Oelze**
Traumlandschaft
["Dream Landscape"]
1961
Pencil on paper
24 1/2 x 35 3/8 inches (62.2 x 89.9 cm)
Signed on recto
(OELZ 4)
Location: H2-E
25.  **Jacques Prévert**
Untitled
ca. 1964
Collage with cut-outs applied to double-weight carte postale
4 1/8 x 6 inches (10.5 x 15.2 cm)
(PREV 1)
Location: FF 4

26.



Dr. Franz Roh
Korsagelandschaft
["Corset Landscape"]
ca. 1930
Collage
3 5/8 x 5 5/8 inches (9.2 x 14.3 cm) -
image
5 1/2 x 7 inches (14 x 17.8 cm) - original
mount ☒
Titled on recto of mount
(ROH 39)
Location: H2-F

27.



Dr. Franz Roh
Untitled
From the *Metamorphosen des Herrn*
Miracoloss 1923-1950, p. 45
ca. 1930
Collage
6 5/8 x 9 5/8 inches (16.8 x 24.4 cm) -
image
12 3/8 x 17 inches (31.4 x 43.2 cm) -
original mount
11 x 8 1/4 inches (27.9 x 21 cm) - sheet
Annotated "23" on recto
(ROH 110)
Location: W2-D

28.

Kay Sage
Passionément, Pas du Tout
1961
Assemblage in artist's frame
12 1/4 x 9 1/4 inches (31.1 x 23.5cm)
Signed & dated on recto / Signed, dated
& titled on verso
(SAGE 2)

29.



Jindřich Štyrský
Untitled
Maquette #1 for *Emilie přichází ke mně*
ve snu
["Emilie Comes to Me ☒ in a Dream"]
1933
Collage of vintage gelatin silver print &
halftone cut-outs affixed to original
mount
9 5/8 x 7 3/8 inches (24.4 x 18.7 cm)
Signed on recto
(STYR 5)
Location: H2-D

30.



Jindřich Štyrský

Untitled

Maquette #7 for *Emilie přichází ke mně ve snu*

["Emilie Comes to Me in a Dream"]

1933

Collage of vintage gelatin silver print & halftone cut-outs affixed to original mount

10 1/2 x 8 5/8 inches (26.7 x 21.9 cm)

Signed on recto

(STYR 8)

Location: W2-G

31.



Yves Tanguy

Roux en hiver

1932

Oil on panel

10 3/8 x 13 inches (26.4 x 33 cm)

Signed & dated on recto / Signed, titled & dated on verso

(TANG 10)

Location: H2-K

32.

Yves Tanguy

Untitled

1944

Gouache on paper

2 1/8 x 10 7/8 inches (5.4 x 27.6cm)

Signed & dated on recto

(TANG 11)

33.



Xanti Schawinsky

Untitled

1945

(printed in *Friem's Four Pages*, May 1946)

Etching

11 x 7 7/8 inches (27.9 x 20 cm) - plate

12 3/4 x 10 1/2 inches (32.4 x 26.7 cm) - sheet

Signed, dated & dedicated "for P.K.

Thomajan" in pencil

(XSCH 1.1)

Location: W2-G

34.



Unica Zürn

Untitled

1959

Ink & gouache on paper

17 3/4 x 24 3/8 inches (45.1 x 61.9 cm)

Signed & dated on recto

Drawing on verso

(ZURN 100)

Location: H2-E