

Hans Bellmer: Drawings, 1930-1964
March 3-May 13, 2016

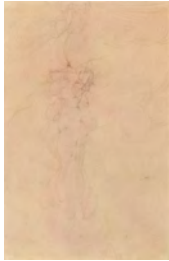
1.



Hans Bellmer

Untitled
ca. 1934
White gouache on black paper
11 1/2 x 8 3/4 inches (29.2 x 22.2 cm)
Initialed in heart on recto
(BELL 273)

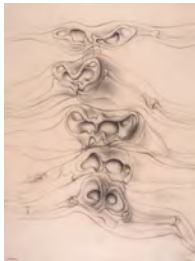
2.



Hans Bellmer

Untitled
(Possibly a portrait of Joyce Reeves)
1939
Pencil & watercolor on paper
18 7/8 x 12 inches (47.9 x 30.5 cm)
(BELL 393)

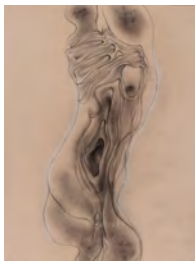
3.



Hans Bellmer

Untitled
(*Ossature de bassin*)
1960
Charcoal & white gouache on paper
mounted on board
25 1/4 x 18 7/8 inches (64.1 x 47.9cm)
- image
28 3/8 x 21 7/8 inches - mount
Signed & dated on recto
(BELL 485)

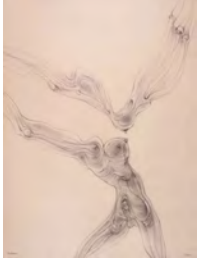
4.



Hans Bellmer

Untitled
1960
Pencil, charcoal & chalk on paper
24 3/4 x 19 inches (62.9 x 48.3 cm)
Signed & dated on recto
(BELL 442)

5.



Hans Bellmer

Untitled

1960

Charcoal & white gouache on paper
mounted on board

24 1/4 x 18 7/8 inches (61.6 x 47.9 cm)

- image

25 1/2 x 19 1/8 inches (64.8 x 48.6 cm)

- mount

Signed & dated on recto

(BELL 484)

6.



Hans Bellmer

Service clos

Editions Georges Visat, Paris, 1965

Soft ground etching in four colors

12 3/4 x 17 inches (32.4 x 43.2 cm) -

image

19 3/4 x 26 inches (50.2 x 66 cm) -

sheet

Edition 41 of 70

Signed & editioned on recto

(BELL 452.01.41)

7.



Hans Bellmer

Preliminary sketch for 1965 etching

Service clos

1961

Pencil on paper

13 1/8 x 17 1/4 inches (33.3 x 43.8 cm)

Signed & dated on recto

(BELL 452)

8.



Hans Bellmer

Untitled

14 rue Bernard Pallisy, Paris, 1938

Pencil & colored pencil on paper

10 5/8 x 8 1/4 inches (27 x 21 cm)

Inscribed on recto

(BELL 88)

9.



Hans Bellmer

Untitled

["Reversible Drawing"]

1953

Pencil & gouache on card

5 1/4 x 4 1/16 inches (13.3 x 10.3 cm)

Signed & dated on recto

(BELL 445)

10.



Hans Bellmer

Untitled ("à Lizica")

1934 (dedicated 1938)

Pencil on paper

7 1/4 x 5 inches (18 x 13 cm)

Signed, titled, dedicated & dated on recto
(BELL 84)

11.



Hans Bellmer

Untitled

1959

Pencil & gouache on paper

9 3/4 x 17 5/8 inches (25 x 45 cm)

Signed on recto / Drawing on verso
(BELL 469)

12.



Hans Bellmer

Untitled

1959

Pencil & gouache on tinted paper

19 x 12 3/8 inches (48.5 x 31.5 cm)

Signed & dated on recto

(BELL 437)

13.



Hans Bellmer

Untitled

ca. 1960

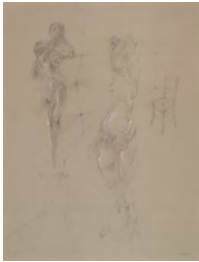
Pencil on graph paper

8 1/2 x 6 1/2 inches (21.6 x 16.5 cm)

Signed & inscribed, "à Mr. Duperier" on
recto

(BELL 466)

14.



Hans Bellmer

Untitled (La Jeune Fille et la Mort)

["The Maiden and Death"]

1963

Pencil & gouache on tinted paper

24 3/4 x 18 7/8 inches (63 x 48 cm)

Signed & dated on recto

(BELL 323)

15.



Hans Bellmer

Untitled

ca. 1953

Ink on paper

8 3/8 x 5 1/4 inches (21.3 x 13.3 cm)

(BELL 164)

16.



Hans Bellmer

Untitled

1940

Pencil on paper

13 3/4 x 9 5/6 inches (35 x 25 cm)

Signed, dated & dedicated, "à Ferdinand Springer amicalement Hans Bellmer

1940" on recto

(BELL 471)

17.



Hans Bellmer

Untitled (Jeune fille bicéphale assise)

["Seated Double-headed Girl"]

ca. 1934

White gouache on black paper affixed to black paper mount

12 7/8 x 9 3/4 inches (32.7 x 24.8 cm) - image

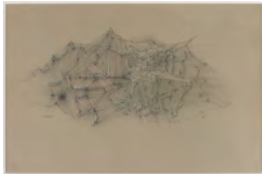
20 1/4 x 15 inches (51.4 x 38.1 cm) - mount

Signed & dedicated "pour Lizica

Codreano" on recto / Drawing on verso

(BELL 287)

18.



Hans Bellmer

Untitled (Pelvis-Eyes-Ears)

1959

Pencil & white gouache on paper

13 x 19 1/4 inches (33 x 48.9 cm) - sheet

Signed & dated on recto

(BELL 165)

19.



Hans Bellmer

Untitled (Self-portrait)

May 9, 1964

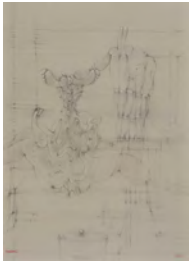
Pencil on graph paper

8 5/8 x 6 1/2 inches (22 x 16.7 cm)

Signed & dated on recto

(BELL 425)

20.



Hans Bellmer

Untitled (marionettes)

1959

Pencil & white gouache on tinted paper

16 1/2 x 12 3/16 inches (41.9 x 31 cm)

(BELL 488)

21.



Hans Bellmer

Untitled (portrait of a young girl)

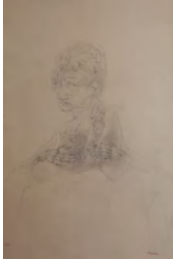
ca. 1930

Pencil on paper

12 1/4 x 9 1/4 inches (31 x 23 cm)

(BELL 82)

22.



Hans Bellmer

Femme - Recto

Femme et Soleil - Verso

1965

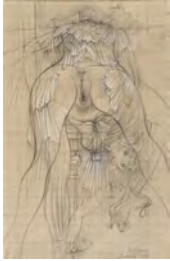
Pencil & gouache on paper

20 x 12 7/8 inches (50.8 x 32.7cm)

Signed and dated on recto

(BELL 491)

23.



Hans Bellmer

Untitled

1946

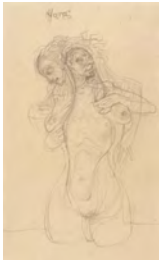
Graphite & white gouache on paper

5 1/2 x 3 5/8 inches (14 x 9.2 cm)

Signed & dated on recto

(BELL 489)

24.



Hans Bellmer

Nora (Hans)

1946

Pencil on paper

6 3/4 x 4 inches (17.1 x 10.2 cm)

Titled on recto

(BELL 482)

25.



Hans Bellmer

Femmes

May 2, 1964

Pencil on paper

8 5/8 x 6 5/8 inches (21.9 x 16.8 cm)

Signed, dated & stamped on verso

(BELL 481)

26.



Hans Bellmer

Study for "A Sade"

1960-1961

Pencil on paper

7 3/4 x 5 3/4 inches (19.7 x 14.6 cm) -
image

10 5/8 x 8 1/4 inches (27 x 21 cm) -
sheet

Signed on recto / Drawing on verso
(BELL 472)

27.



Hans Bellmer

Untitled

(à Jacqueline)

1944

Pencil on paper

7 3/4 x 6 1/2 inches (19.7 x 16.5 cm)

Signed, dated & dedicated "à Jacqueline"
on recto

(BELL 487)

28.



Hans Bellmer

Untitled

1961

Pencil on paper

10 1/2 x 8 1/4 inches (26.7 x 21 cm)

Signed & dated on recto

(BELL 407)

29.



Hans Bellmer

Untitled

1962

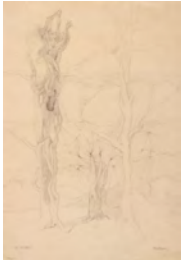
Pencil on paper

5 1/2 x 3 1/2 inches (14 x 8.9 cm)

Signed & dated on recto

(BELL 92)

30.



Hans Bellmer

Les Milles

October 19, 1939

Pencil on paper

10 3/4 x 7 3/8 inches (27.3 x 18.7 cm)

Signed, titled & dated on recto

(BELL 456)

31.



Hans Bellmer

Untitled (Roaches)

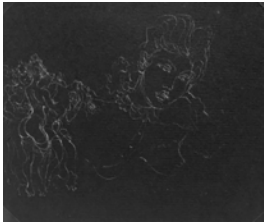
ca. 1934

Pencil on paper

6 x 5 inches (15.2 x 12.7 cm)

Initialed & dated in pencil on recto
(BELL 87)

32.



Hans Bellmer

Untitled

ca. 1934

White gouache on black paper

4 5/8 x 5 5/8 inches (11.7 x 14.3cm)

(BELL 490)