

## 2017 FIAC CHECKLIST

1.



**Alexander Archipenko**

*At the Edge of the Lake*

1927

Oil on canvas

33 1/8 x 27 1/4 inches (84.1 x 69.2 cm)

- including frame

Signed on recto

(ARCH 2)

2.



**Janusz Maria Brzeski**

*Prawo w obrazach*

["Law in Pictures"]

1934

Collage of vintage gelatin silver print & halftone cut-outs with gouache on buff stock

5 1/8 x 14 1/4 inches (13 x 36.2 cm)

Initialed & dated on recto

(BRZE 10)

3.



**Janusz Maria Brzeski**

*Lesbos II*

From the cycle *Sex*

1930

Collage of halftone cut-outs & ink on buff stock

12 7/8 x 9 3/4 inches (32.7 x 24.8 cm) - image

14 7/8 x 11 7/8 inches (37.8 x 30.2 cm)

- mount

Signed, dated & annotated "Paris" on recto

(BRZE 11)

4.



**Janusz Maria Brzeski**

*Self-portrait*

From the cycle *Sex*

1930

Collage of halftone cut-outs & ink on buff stock

12 7/8 x 9 3/4 inches (32.7 x 24.8 cm) - image

14 7/8 x 11 7/8 inches (37.8 x 30.2 cm) - mount

Signed, dated & annotated "Paris" on recto

(BRZE 12)

5.



**Janusz Maria Brzeski**

*The Searches (from the cycle "Sex")*

1930

Collage of halftone cut-outs & ink on buff stock

12 3/4 x 9 3/4 inches (32.4 x 24.8 cm) - image

14 7/8 x 11 7/8 inches (37.8 x 30.2 cm) - mount

Signed, dated & annotated "Paris" on recto

(BRZE 13)

6.



**Janusz Maria Brzeski**

*Without Aim (from the cycle "Sex")*

1930

Collage of halftone cut-outs & ink on buff stock

12 3/4 x 9 3/4 inches (32.4 x 24.8 cm) - image

14 7/8 x 11 7/8 inches (37.8 x 30.2 cm) - mount

Signed, dated & annotated "Paris" on recto

(BRZE 14)

7.



**Janusz Maria Brzeski**

*A Common Thing*

From the cycle *Sex*

1930

Collage of halftone cut-outs & ink on buff stock

12 3/4 x 9 3/4 inches (32.4 x 24.8 cm) - image

14 7/8 x 11 7/8 inches (37.8 x 30.2 cm) - mount

Signed, dated & annotated "Paris" on recto

(BRZE 15)

8.



**Janusz Maria Brzeski**

*Untitled ["The only witness disappears..."]*

1934

Collage of halftone cut-outs & paint on paper

3 1/2 x 10 inches (8.9 x 25.4 cm)

Initialed on recto

(BRZE 19)

9.



**Erich Buchholz**

*Platte . -*

"Plate . -" [The Black Square]

1921

Oil on wood (relief)

21 5/8 x 15 1/2 x 1 inches (55 x 39.5 x 2.5 cm)

31 1/8 x 25 x 2 3/8 inches (79 x 63.5 x 6 cm) - framed

"EB", "21" and "II" (or "11") incised on verso / Signed and titled "Platte" in pencil on verso

(BUCH 1 )

10.



**Constantin Brancusi**

*La Colonne sans fin*

["The Endless Column"]

ca. 1926-1927

Vintage gelatin silver print

17 7/8 x 22 3/4 inches (45.5 x 57.9 cm)

Signed & dedicated to Mme. Claire Croiza on verso

(CBRA 2)

11.



**Jean Davi**

*Untitled (collage for unu #46, unu-moși / unu-luna park, p. 5)*

1932

Photocollage

4 3/4 x 6 3/4 inches (12 x 17.1 cm)

(DAVI 1 )

12.



**Jean Davi**

*Untitled (collage for unu #46, unu-moși / unu-luna park, p. 4)*

1932

Photocollage

6 1/2 x 4 7/8 inches (16.5 x 12.3 cm)

(DAVI 2)

13.



**Jean Davi**

Untitled (collage for *unu* #46, *unu-moși* / *unu-luna park*, p. 3)

1932

Photocollage

3 x 2 3/4 inches (7.7 x 7 cm)

Picturing Stephan Roll, Ilarie Voronca & father of Sașa Pana

(DAVI 3)

14.



**Jean Davi**

Untitled (collage for *unu* #46, *unu-moși* / *unu-luna park*, p. 6)

1932

Photocollage incorporating photographs by Josef Berman

5 1/4 x 5 7/8 inches (13.5 x 15 cm)

(DAVI 4)

15.



**István Farkas**

*Self Portrait with Lover #1*

Summer, 1943

Ink on paper

13 1/8 x 17 3/8 inches (33.3 x 44.1 cm)

(FARK 1)

16.



**István Farkas**

*Self Portrait with Lover #2*

Summer, 1943

Ink & pencil on paper

13 1/8 x 17 3/8 inches (33.3 x 44.1 cm)

(FARK 2)

17.



**István Farkas**

*Self Portrait with Lover #3*

Summer, 1943

Ink & pencil on paper

13 1/8 x 17 3/8 inches (33.3 x 44.1 cm)

(FARK 3)

18.



**Marcel Janco**

Untitled (Abstraction)

1926

Oil on canvas in original artist's frame

13 3/8 x 19 1/4 inches (34 x 49 cm)

18 3/4 x 24 5/8 inches (47.5 x 62.5 cm)

- framed

(JANC 3)

19.



**Josef Berman**

Untitled (photograph reproduced in *unu* #46, *unu-moși / unu-luna park*, p. 7)  
1932  
3 7/8 x 4 3/8 inches (10 x 11 cm)  
Stamped on verso  
(JBER 1)

20.



**Josef Berman**

"Lionela (the Lion-woman)" (photograph reproduced on the cover of *unu* #46, *unu-moși / unu-luna park*, p. 7)  
1932  
4 1/2 x 4 3/4 inches (11.4 x 12.1 cm)  
Stamped on verso  
(JBER 2)

21.



**Ljubiša Jocić**

*Pet Zena ["Five Women"]*  
1932  
Ink, gouache & collage on board  
38 3/4 x 27 1/4 inches (98.4 x 69.2 cm)  
Signed, titled & dated on recto  
(JOCI 10)

22.



**André Kertész**

*Distortion #9*  
1933  
Vintage gelatin silver print  
7 x 9 3/4 inches (17.8 x 24.8cm)  
Numbered "9" in pencil & "32 bis, Rue du Cotentin, Paris-XV" copyright credit stamp on verso  
(KERT 42)

23.



**André Kertész**

*Distortion #118*  
1933  
Vintage gelatin silver print  
7 x 8 1/4 inches (17.8 x 21 cm)  
Numbered "118" in pencil & "Photo Personnelle" and "32 bis, Rue du Constantin, Paris-XV" stamps on verso  
(KERT 43)

24.



**André Kertész**

*Distortion #142*  
1933  
Vintage gelatin silver print  
7 1/8 x 6 3/4 inches (18.1 x 17.1 cm)  
Numbered "142" in pencil & "32 bis, Rue du Cotentin, Paris-XV" copyright credit stamp on verso  
(KERT 44)

25.



**André Kertész**

*Distortion #66*

1933

Vintage gelatin silver print

9 x 7 inches (22.9 x 17.8 cm)

Numbered "66" in pencil & "Photo

Personnelle" and "32 bis, Rue du

Constantin, Paris-XV" stamps on verso

(KERT 45)

26.



**Max Herman Maxy**

*Konstruktion*

["Construction"]

1923

Oil on cardboard

27 1/8 x 19 1/4 inches (69 x 49 cm)

36 1/4 x 28 3/8 inches (92 x 72 cm) -

framed

(MAXY 1)

27.



**Georges Papazoff**

*Tête fantastique*

["Fantastic Head"]

ca. 1928

Oil on canvas

36 1/4 x 28 3/4 inches (92 x 73 cm)

Signed on recto

(PAPA 2)

28.



**S. (Jules) Perahim (with Dan Faur)**

Untitled (drawing Perahim / text Faur)

1930

Ink on paper

11 1/2 x 8 3/8 inches (29.4 x 21.2 cm)

Signed "S. Faur" & "Dan Perahim" on

recto / Drawing on verso

(PERA 1)

29.



**Kazimierz Podsadecki**

*Kino Rozmaitości*

["Variety Cinema" / poster project]

1933

Collage and gouache on paper

13 5/8 x 9 1/8 inches (34.6 x 23.2cm)

Initialed on recto

(PODS 2)

30.



**Marko Ristić**

*Quel est ce mort? ["What is Death?"]*

1936 (1938?)

Collage on paper

23 5/8 x 31 1/2 inches (60 x 80 cm)

(RIST 13)

31.



**Aleksandr Rodchenko (with Bauhaus Workshops)**

*Der Sieg der Farbe, Composition 73*

Weimar & Berlin: Photographische Gesellschaft, 1924

Lithograph on wove paper

13 3/4 x 5 5/8 inches (35.1 x 14.4 cm) - image

22 1/4 x 15 1/2 inches (56.7 x 39.4 cm) - sheet

One of only three known examples (RODC 60)

32.



**Stephan Roll & Saša Paná (with Victor Brauner)**

Untitled (collage for the cover of *unu* #26, June 1930)

Photocollage

6 1/8 x 7 1/4 inches (15.7 x 18.5 cm)

(ROLL 1)

33.



**Jindřich Štyrský**

Untitled

ca. 1931

Collage of vintage gelatin silver print with applied silver print cut-outs

6 1/2 x 4 5/8 inches (16.5 x 11.7 cm)

(STYR 3)

34.



**Jindřich Štyrský**

Untitled

Maquette #1 for *Emilie přichází ke mně ve snu*

["Emilie Comes to Me in a Dream"]

1933

Collage of vintage gelatin silver print & halftone cut-outs affixed to original mount

9 5/8 x 7 3/8 inches (24.4 x 18.7 cm)

Signed & dated on recto

(STYR 5)

35.



**Jindřich Štyrský**

Untitled

Maquette #4 for *Emilie přichází ke mně ve snu*

["Emilie Comes to Me in a Dream"]

1933

Collage of vintage gelatin silver print & halftone cut-outs affixed to original mount

11 1/2 x 9 1/2 inches (29.2 x 24.1 cm)

Signed & dated on recto of mount

(STYR 7)

36.



**Jindřich Štyrský**

Untitled (collage)

March 8, 1933

Collage of photographic and halftone cut-outs & ink on paper

12 5/8 x 10 3/4 inches (32 x 27.4 cm)

Signed & dated on recto / Dedicated

"Milému Jiřímu jeho Jindřich Štyrský. 8. III.33" on verso

(STYR 104)

37.



**Josef Sudek**

*Eye on Stone*

1950 / printed 1950s

Vintage gelatin silver print

11 3/4 x 9 1/2 inches (29.8 x 24.1 cm)

(SUDE 2)

38.



**Waclaw Szpakowski**

*C4*

1924

Ink on tracing paper

9 3/4 x 27 5/8 inches (25 x 70 cm)

(SZPA 2)

39.



**Waclaw Szpakowski**

*E2*

1926

Ink on tracing paper

13 3/4 x 17 1/4 inches (35 x 43.8 cm)

(SZPA 3)

40.



**Waclaw Szpakowski**

*S3*

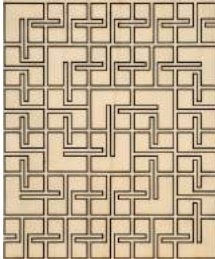
1939-1943

Ink on tracing paper

10 5/8 x 19 5/8 inches (27 x 50 cm)

(SZPA 4)

41.



**Waclaw Szpakowski**

*F13*

1926

Ink on tracing paper

13 3/4 x 17 1/4 inches (37 x 27.5 cm)

(SZPA 5)



42.



**Karel Teige**

*Peisaj (Paysage)*

["Landscape"]

1923

Ink on paper (Devětsil letterhead on verso)

11 3/8 x 11 3/4 inches (29 x 29.8 cm)

Annotated "Charles Teige" on recto by Marcel Janco  
(TEIG 11)

43.



**Stefan Themerson**

Untitled

Collage of four enlarged frames from

*Europa*

1932

Vintage gelatin silver prints mounted on card stock

10 x 8 1/4 inches (25.4 x 21 cm) -

irregular

Labeled on recto

(THEM 13)

44.



**Stefan Themerson**

*Untitled (Multiple exposures of Henryk Haller Sobieralski)*

Two consecutive frames from *Europa*  
1932

Vintage gelatin silver print (carte postale)

5 1/4 x 3 3/8 inches (13.3 x 8.6 cm)

Initialed & annotated on verso

(THEM 17)

45.



**Stefan Themerson**

Untitled

Collage of six enlarged frames from

*Europa*

1932

Vintage gelatin silver prints mounted on card stock

5 1/4 x 9 5/8 inches (13.3 x 24.4 cm)

(THEM 22)

46.



**Dolfi Trost**

Untitled (Vaporization)

1944

Oil

13 1/2 x 19 1/2 inches (34.5 x 49.7 cm)

Signed on verso

(TROS 1)

47.



**Dolfi Trost**

*Toutes les proses*

["All Processes"]

1944

Oil

16 3/8 x 13 5/8 inches (41.5 x 34.7 cm)

Numbered "40" & signed on verso

(TROS 2)

48.



**Dolfi Trost**

*À Reni*

["To Reni"]

1944

Oil

12 3/8 x 15 5/8 inches (31.5 x 39.8 cm)

Signed on verso

(TROS 3)

49.



**Victor Vasarely**

*Contes*

["Tales"]

1931-1932

Vintage gelatin silver print, gouache & ink on cardboard (photo collage)

14 1/4 x 9 1/4 inches (36.2 x 23.5 cm)

Signed & dated on recto / Accompanied by a certificate of authenticity by Michèle Vasarely (daughter-in-law)

(VASA 2)

50.



**Victor Brauner**

*Machine Surréaliste*

1937

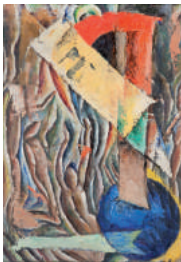
Collage mounted on card

5 7/8 x 8 1/4 inches (14.9 x 21 cm)

Signed & dated on recto

(VBRA 204)

51.



**Victor Brauner**

*Construction "Punct"*

1924

Oil on canvas

37 x 26 inches (94 x 66 cm)

46 x 35 3/8 inches (117 x 90 cm) -

framed

Certificate of Samy Kinge, Expert

(VBRA 205)

52.



**Victor Brauner**

*Construction "Punct"*

1924

Ink on paper

15 1/2 x 13 inches (39.5 x 33 cm) -

framed

Signed on recto

(VBRA 206)

53.



**Victor Brauner**

Untitled (Ilarie Voronca and Victor Brauner in Park Cismigiu, Bucharest)  
1924

Vintage photograph with with constructivist self-portrait in ink (drawings in pencil - one a self-portrait - on verso)

5 1/2 x 3 1/2 inches (13.8 x 8.8 cm)  
Notated "Voronca" and "Victor" on verso (VBRA 207)

54.



**Ilia Zdanevitch**

41°

1922

Lithograph on paper

21 3/8 x 18 7/8 inches (54.9 x 47.9 cm)  
(ZDAN 45.2)