

FIAC 2019 Checklist

1.



**Vito Acconci**

*Control Box*

1971

Two (2) vintage gelatin silver prints  
affixed to original mount

8 x 10 inches (20.3 x 25.4 cm) - overall  
work

3 1/8 x 4 3/4 inches (7.9 x 12.1 cm) -  
each image

Stamped, titled & dated on verso  
(ACCO 12)

2.



**Vito Acconci**

*Return Glance*

1969

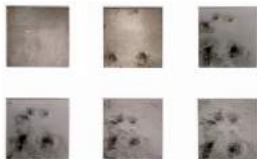
Twelve (12) vintage gelatin silver prints  
mounted three (3) to a sheet

34 x 10 7/8 inches (86.4 x 27.6 cm) -  
overall work

3 1/2 x 3 1/2 inches (8.9 x 8.9 cm) -  
each image

Signed, titled & dated on verso  
(ACCO 13)

3.



**Vito Acconci**

*Push-ups*

1969

Six (6) vintage gelatin silver prints  
16 x 20 inches (40.6 x 50.8 cm) -  
overall matted size

3 1/2 x 3 1/2 inches (8.9 x 8.9 cm) -  
each image

Initialed, titled, dated & numbered on  
verso  
(ACCO 16)

4.



**Vito Acconci**

*Coming to Rest*

1969

Four (4) vintage gelatin silver prints  
affixed to original mount

11 x 8 1/2 inches (27.9 x 21.6 cm) -  
overall work

3 1/2 x 3 1/2 inches (8.9 x 8.9 cm) -  
each image

Initialed, titled & dated on verso  
(ACCO 19)

5.



**Vito Acconci**

*Channels*

1971

Two (2) vintage gelatin silver prints affixed to original mount  
10 x 8 inches (25.4 x 20.3 cm) - overall work

3 1/4 x 4 3/4 (8.3 x 12.1 cm) - each image

Signed, stamped & dated on verso  
(ACCO 21)

6.



**Robert Carlton (Bob) Brown II**

*You Blossoms rain trickles AND petals*  
*YOU RING IN MY EARS*

ca. 1925

Tempera & ink on paper  
12 5/8 x 13 1/8 inches (32.1 x 33.3 cm)

Signed "bob brown bis" on recto  
(BBRO 1)

7.



**Julian Beck**

*The Living Theater presents "UBU The King" by Alfred Jarry and "The Heroes" by John Ashberry*

August 1, 1952

Silkscreen, metallic paint & gouache on paperboard  
16 3/4 x 16 3/4 inches (42.5 x 42.5 cm)  
(BECK 11)

8.



**Julian Beck**

*The Living Theater presents "UBU The King" by Alfred Jarry and "The Heroes" by John Ashberry*

August 1, 1952

Silkscreen, metallic paint & gouache on paperboard  
16 3/4 x 16 3/4 inches (42.5 x 42.5 cm)  
(BECK 12)

9.



**Hans Bellmer**

*Untitled (Jeune fille bicéphale assise)*

["Seated Double-Headed Girl"], 1934-1938

White gouache on black paper affixed to black paper mount

12 7/8 x 9 3/4 inches (32.7 x 24.8 cm) - image

20 1/4 x 15 inches (51.4 x 38.1 cm) - mount

Signed & dedicated "pour Lizica Codreano" on recto of mount / Drawing on verso  
(BELL 287)

10.



**Hans Bellmer**

*Untitled (variant of the drawing for Les Marionnettes [1969])*

1958

Oil, gouache & pencil on canvas

6 1/4 x 4 3/4 inches (15.9 x 12.1 cm)

Signed & dated on verso at top of  
stretcher bar

(BELL 412)

11.



**Hans Bellmer**

Untitled

1960

Charcoal & white gouache on paper

mounted on board

24 1/4 x 18 7/8 inches (61.6 x 47.9 cm)

- image

25 1/2 x 19 1/8 inches (64.8 x 48.6 cm)

- mount

Signed & dated on recto

(BELL 484)

12.



**Hans Bellmer**

Untitled (Ossature de bassin)

1960

Charcoal & white gouache on paper

mounted on board

25 1/4 x 18 7/8 inches (64.1 x 47.9 cm)

- image

28 3/8 x 21 7/8 inches (72.1 x 55.6 cm)

- mount

Signed & dated on recto

(BELL 485)

13.



**Hans Bellmer**

*La Toupie (or Le Père)*

1956

Watercolor & pencil on paper

9 1/2 x 9 3/8 inches (24.1 x 23.8 cm) -

image

15 1/8 x 10 7/8 inches (38.4 x 27.6 cm)

- sheet

Signed & dated on recto

(BELL 495)

14.



**Hans Bellmer**

*À Sade*

Study for "To Sade", 1961

Pencil on paper

10 5/8 x 8 1/4 inches (27 x 21 cm)

Signed on recto

(BELL 496.02)

15.



**Hans Bellmer**

*À Sade*

Study for "To Sade", 1961

Pencil on paper

10 5/8 x 8 1/4 inches (27 x 21 cm)

Signed on recto

(BELL 496.03)

16.



**Joseph Cornell**

Untitled

1930s

Collage

9 7/8 x 7 3/8 inches (25.1 x 18.7 cm)

Cornell Estate inventory #1M-15F

(TQVM)

(CORN 28)

17.



**Denise Bellon**

*Mannequin par André Masson*

*Exposition Internationale du Surréalisme, Paris, January 17-February 24, 1938*

Vintage gelatin silver print

9 3/4 x 9 3/8 inches (24.8 x 23.8 cm)

Stamped on verso

(DBEL 1)

18.



**Raphael Delorme**

Untitled ["Young Woman in Front of Machines" or "Nude in Machine Room"]  
ca. 1930

Oil on "Van Eyck 12F" wood fiber panel  
19 5/8 x 24 inches (50 x 61 cm)

Signed on recto

(DELO 1)

19.



**Marc Eemans**

*Aux Frontières de l'oiseau*

["Borders of the Bird"]

1928

Oil on canvas

36 1/4 x 28 3/4 inches (92 x 73 cm)

Signed & dated on recto

(EEMA 1)

20.



**Marc Eemans**

*Burgundy Cross*

1969

Oil on wood & canvas

35 3/8 x 27 1/2 inches (90 x 70 cm)

Signed on recto

(EEMA 2)

21.



**Marc Eemans**

*First Common Sense*

1942

Oil on canvas

45 5/8 x 35 inches (116 x 89 cm)

Signed & dated on verso

(EEMA 3)

22.



**Brion Gysin, William S. Burroughs,  
Ian Sommerville**

*Dreamachine*

1961-1979

Mixed media (aluminum, plexiglass,  
paper)

46 1/2 x 11 7/8 inches (118 x 30 cm)

Edition 1 of a limited edition (four?)

constructed by Carl Laszlo, Basel under  
the supervision of Gysin and

Sommerville

Signed?

(GYSI 15.1)

23.



**Brion Gysin, William S. Burroughs,  
Ian Sommerville**

*Dreamachine*

1979?

Paint (?) on paper

32 5/8 x 78 3/4 inches (83 x 200 cm)

Signed?

(GYSI 16)

24.



**David Hare**

*Untitled (from "VVV Portfolio")*

ca. 1942

Toned vintage gelatin silver print from a  
heat-altered negative ("brulage")

11 7/8 x 9 3/4 inches (30.2 x 24.8 cm) -  
image

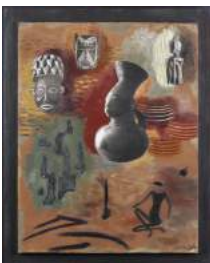
17 7/8 x 13 7/8 inches (45.4 x 35.2 cm)

- mount

Signed on recto

(HARE 4.1)

25.



**Marta Hoepffner**

*Afrikanische Kunst*

["African Art"]1935

Tempera on board with applied vintage  
silver print cut-outs

nailed to original stepped, black wood  
mount

19 3/8 x 15 inches (49.2 x 38.1 cm) -

image

22 x 17 1/2 inches (55.9 x 44.5 cm) -

mount

Signed on recto

(HOEP 1)

26.



**Georges Hugnet**

*La Granivelle d'Austerlitz*

["The Austerlitz Spandle"]#30 from the series *La Vie amoureuse des Spumifères* ["The Love Life of the Spumifers"]1947-1948

Gouache on vintage (ca. 1920) carte postale

5 3/8 x 3 3/8 inches (13.7 x 8.6 cm) - image

9 3/4 x 7 1/4 inches (24.8 x 18.4 cm) - mount

(HUGN 20)

27.



**Georges Hugnet**

*Le Torindon à Rapière*

["The Rapiered Rottlebom"]#3 from the series *La Vie amoureuse des Spumifères* ["The Love Life of the Spumifers"]1947-1948

Gouache on vintage (ca. 1920) carte postale

5 3/8 x 3 3/8 inches (13.7 x 8.6 cm) - image

9 3/4 x 7 1/4 inches (24.8 x 18.4 cm) - mount

(HUGN 25)

28.



**Georges Hugnet**

*La Bisquelle Rieuse*

["The Laughing Duowatt"]

No. 24 from the series *La Vie amoureuse des Spumifères*

["The Love Life of the Spumifers"]

1947-48

Gouache on vintage (ca. 1920) carte postale

5 3/8 x 3 3/8 inches (13.7 x 8.6 cm) - image

9 3/4 x 7 1/4 inches (24.8 x 18.4 cm) - mount

(HUGN 34)

29.



**Georges Hugnet**

*Le Grattecol Entêté*

["The Stubborn Neckscroop"]

No. 1 from the series *La Vie Amoureuse des Spumifères*

["The Love Life of the Spumifers"]

1947-48

Gouache on vintage (ca. 1920) carte postale

5 3/8 x 3 3/8 inches (13.7 x 8.6 cm) - image

9 3/4 x 7 1/4 inches (24.8 x 18.4 cm) - mount

(HUGN 38)

30.



**Marcel Jean**

*Le Zuyderzee*

1937

Ink on paper

9 7/8 x 6 3/8 inches (25.1 x 16.2 cm)

Signed & dated on recto

(JEAN 1)

31.



**Gerome Kamrowski**

*Embalmed Universe*

ca. 1939

Shadow-box collage assemblage of black board, halftone cut-outs, gouache & ink

14 1/2 x 16 inches (36.8 x 40.6 cm)

Signed in gouache on recto

(KAMR 1)

32.



**Gerome Kamrowski**

*Embalmed Universe #2*

(Cosmo-Porno Principia)1939

Shadow-box collage

16 3/8 x 14 3/8 inches (41.6 x 36.5 cm)

Signed & titled in gouache on recto /

Signed & titled on verso

(KAMR 2)

33.



**Nathan Lerner**

*Brown's Face: Focused Vision for the Camera*

1939 (printed 1940)

Vintage gelatin silver print

19 5/8 x 15 3/4 inches (49.8 x 40 cm)

Signed & annotated by Lerner on verso

(LERN 1)

34.



**Boris Lipnitzki**

*Albert Dieudonné dans 'Napoléon' d'Abel Gance* ["Albert Dieudonné in Abel Gance's 'Napoléon'"]

1927 - film

Vintage gelatin silver print

23 x 30 inches (58.4 x 76.2 cm) - print

27 5/8 x 34 1/2 inches (70.2 x 87.6 cm)

- frame

(LIPN 2)

35.



**Max Ernst**

*Santa Conversazione*

["Holy Conversation"]1921

Vintage gelatin silver print with graphite,  
ink & gouache (photomontage)

9 x 5 3/8 inches (22.9 x 13.7 cm) -

image

10 1/8 x 6 5/8 inches (25.7 x 16.8 cm) -

mount

Signed & dedicated "à Gala" on recto

(MERN 61)

36.



**Thérèse Le Prat**

Untitled ["Rainy Taxi" of Salvador Dalí]

1938

Vintage gelatin silver print

9 3/8 x 7 1/8 inches (23.8 x 18.1 cm)

Stamped on verso

(PRAT 1)

37.



**Pierre Roy**

*Le Jardin potager*

["The Vegetable Garden"]

Oil on canvas

21 5/8 x 14 7/8 inches (55 x 38 cm)

Signed "P. Roy" on recto

(PROY 1)

38.



**Pierre Roy**

*L'Orage*

["The Storm"]

1928

Oil on canvas

24 x 18 1/2 inches (61 x 47 cm)

Signed "P. Roy" on recto

(PROY 2)

39.



**Andre Racz**

*Study with Birdhead and Shellhead #2*

1943

Collage of halftone cut-outs, ink, colored  
pencil & watercolor






21 3/4 x 13 7/8 inches (55.2 x 35.2 cm)

Signed, numbered, titled & dated on

recto

(RACZ 1)



40.  **Andre Racz**  
*Newborn Bird #13*  
 1943  
 Collage of halftone cut-outs & ink  
 13 7/8 x 21 3/4 inches (35.2 x 55.2 cm)  
 Signed, numbered, titled & dated on recto  
 (RACZ 3)
41.  **Kurt Schwitters**  
*Mz 2014 / Kommt Ueberhaupt nicht in Frage*  
 ["Completely Out of the Question"]1924  
 Collage  
 9 x 6 1/2 inches (22.9 x 16.5 cm)  
 Signed, titled & dated on recto  
 (SCHW 9)
42.  **Bernard Schultze**  
*Looking in the Light*  
 1967  
 Pencil on paper  
 20 3/4 x 25 3/4 inches (52.7 x 65.4 cm)  
 Signed & dated on recto  
 (SCHZ 4)
43.  **Arthur Siegel**  
*Untitled (faces)*  
 ca. 1937  
 Vintage gelatin silver print affixed to original mount (photogram)  
 19 1/4 x 15 3/8 inches - image  
 20 x 16 inches - mount  
 Signed, dated & initialed by Adam Siegel (son) on verso of mount / Annotated "Taylor St." and "ASE 485" on verso  
 (SIEG 2)
44.  **Arthur Siegel**  
*Untitled (faces / one with cigarette)*  
 ca. 1937  
 Vintage gelatin silver print affixed to original mount (photogram)  
 12 3/4 x 9 1/2 inches (32.4 x 24.1 cm)  
 Stamped & annotated on verso /  
 Initialed & incorrectly dated 1946 by Adam Siegel (son) on verso  
 (SIEG 3)

45.



**Jindřich Štyrský**

Untitled

1931

Collage of halftone cut-outs on plate (gravure) from *Photographie, Arts et Métiers Graphiques*, ca. 1931

11 1/2 x 8 7/8 inches (29.2 x 22.5 cm) - image

12 1/2 x 9 3/4 inches (31.8 x 24.8 cm) - mount

Signed & dated on recto of mount (STYR 107)

46.



**Jindřich Štyrský**

Untitled [From the series *Stěhovací kabinet* ("Vanity Case")]

1934

Collage of halftone cut-outs on engraving 13 3/8 x 9 1/8 inches (34 x 23.2 cm)

Signed & dated "34" (?) on recto (STYR 109)

47.



**Yves Tanguy**

*Composition*

1943

Gouache on paper

9 7/8 x 12 1/4 inches (25 x 31 cm)

Signed & dated on recto (TANG 20)

48.



**Karel Teige**

Untitled

1944

Collage

6 1/4 x 8 1/2 inches (15.9 x 21.6 cm)

Initialed "K.T." & dated on recto (TEIG 12)

49.



**Karel Teige**

Untitled

1941

Collage of halftone cut-outs

11 1/4 x 9 1/8 inches (28.6 x 23.2 cm)

Signed & dated on recto (TEIG 13)

50.



**Raoul Ubac**

*Mannequins of Raoul Ubac, Max Ernst.*

*Joan Miro, Wolfgang Paalen*

1938

Vintage gelatin silver print mounted on brown paper

8 7/8 x 6 1/2 inches (22.5 x 16.5cm) -

by sight

(UBAC 10)

51.



**Raoul Ubac**

*Mannequin of Salvador Dali*

1938

Vintage gelatin silver print mounted on brown paper

8 7/8 x 4 7/8 inches (22.5 x 12.4cm) -

by sight

(UBAC 8)

52.



**Raoul Ubac**

*Ultrameuble of Kurt Seligmann*

1938

Vintage gelatin silver print mounted on brown paper

8 3/4 x 6 3/8 inches (22.2 x 16.2cm) -

by sight

(UBAC 9)

53.



**Unica Zürn**

*"Bibi, ist eine welsche Hexe!" (original drawing for Hexen Texte ["Witches Text"], p. 9)*

1953

Ink on paper (torn drawing reassembled by Hans Bellmer)

6 1/8 x 5 7/8 inches (15.7 x 14.7 cm)

Signed & dated on recto / Stamped on verso

(ZURN 6)

54.



**Unica Zürn**

Untitled

1956

Ink & gouache on paper (torn drawing reassembled by Hans Bellmer)

9 1/2 x 7 1/4 inches (24.1 x 18.4 cm)

Signed & dated on recto

(ZURN 126)

55.



**Unica Zürn**

Untitled

1960s

Ink, gouache & watercolor on paper

19 1/2 x 25 1/2 inches (49.5 x 64.8 cm)

Signed on recto

(ZURN 135)

56.



**Unica Zürn**

*Der Geist aus der Flasche*  
["The Spirit of the Bottle"] Sheet from  
*Orakel und Spektakel* ["Oracle and  
Spectacle"], Book V (unpublished  
manuscript)

1960

Ink & India ink on paper

12 7/8 x 9 7/8 inches (32.9 x 25.2 cm)

Signed on recto

(ZURN 139C)

57.



**Unica Zürn**

Untitled

1966

Ink on paper

9 7/8 x 7 1/2 inches (25.1 x 19.1 cm)

Signed & dated on recto / Stamped "17"  
on verso

(ZURN 143)

58.



**Unica Zürn**

Untitled (double-sided drawing)

1960

Ink on paper

11 7/8 x 8 1/2 inches (30.2 x 21.6 cm)

Numbered in pencil on each side

(ZURN 146)

59.



**Unica Zürn**

Untitled

1968

Ink & gouache on board

10 1/2 x 8 1/2 inches (26.7 x 21.6 cm)

Signed & dated on recto / Notated "No.

33 Mr. Rabain" on verso

(ZURN 149)

60.



**Unica Zürn**

Untitled, 1957

Ink on moiré (silk)

13 3/4 x 10 5/8 inches (34.9 x 27 cm)

Signed "Unica" and "57" on recto /

Stamped "COULEURS FINES, A.

BOSELUT, 14 Rue des Deux Ponts,

PARIS" on verso

(ZURN 154)

61.



**Unica Zürn**

*Les Poètes en plein travail*

["Poets in Full Swing"]

Île de Ré, 1963-1964

Ink and gouache on paper

24 x 19 3/8 inches (61 x 49.2 cm)

Signed "Unica Zürn 1963" bottom /

Signed " printemps 64, Ile de Re, Unica Zürn" top (upside down)

(ZURN 155)

62.



**Unica Zürn**

Untitled [possibly "Bon jour Monsieur

M.-M = MON"], 1960

Ink on paper mounted on paperboard

25 1/4 x 18 7/8 inches (63.5 x 48.4 cm)

Signed "Unica Zürn Paris 1960" &

dedicated "à Carl Laszlo à coté de L'hotel d'espérance au Henri Michaux comme

vous voulez"

(ZURN 156)

63.



**Unica Zürn**

*Es war ein Kind, das Wollte nie...*

["There was a child that never

wanted..."]

1963

India ink on tinted paper

24 1/2 x 19 1/4 inches (62.1 x 48.8 cm)

Signed & dated on recto

(ZURN 157)