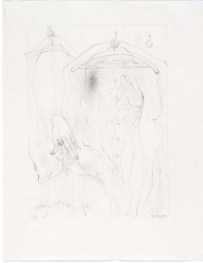


**SADE: Artists Under the Influence**

March 21-June 29, 2018

1.



**Hans Bellmer**

*Plus Lourde (pour À Sade)*

Study for "Heavier" (for "To Sade"),  
1961

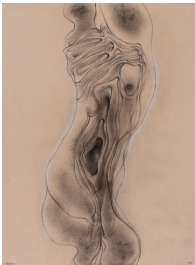
Pencil on paper

10 5/8 x 8 3/8 inches (27 x 21.2 cm)

Signed & dated on recto

(BELL 496.07)

2.



**Hans Bellmer**

Untitled (À Sade), 1960

Pencil, charcoal & chalk on paper

24 3/4 x 19 inches (62.9 x 48.3 cm)

Signed & dated on recto

(BELL 442)

3.



**Hans Bellmer**

*À Sade*

Study for "To Sade", 1961

Pencil on paper

10 5/8 x 8 1/4 inches (27 x 21 cm)

Signed & dated on recto

(BELL 496.09)

4.



**Man Ray**

*The Imaginary portrait of Marquis de  
Sade*

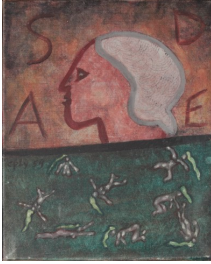
Lithograph on paper

28 7/8 x 20 1/2 inches (73.3 x 52.1  
cm)

Signed by Man Ray on recto

(RAY 127)

5.



**William Copley**

*Sade*

1959

Oil on canvas

10 5/8 x 8 5/8 inches (27 x 21.9 cm)

(COPL 1)

6.



**Hans Bellmer**

*À Sade*

Study for "To Sade", 1961

Pencil on paper

10 5/8 x 8 1/4 inches (27 x 21 cm)

Signed on recto

(BELL 496.02)

7.



**Hans Bellmer**

*À Sade*

Study for "To Sade", 1961

Pencil on paper

10 5/8 x 8 1/4 inches (27 x 21 cm)

Signed on recto

(BELL 496.03)

8.



**Hans Bellmer**

*À Sade*

Study for "To Sade", 1961

Pencil on paper

10 5/8 x 8 3/8 inches (27 x 21.2 cm)

Signed & dated on recto

(BELL 496.05)

9.



**Hans Bellmer**

*À Sade*

Study for "To Sade", 1961

Pencil on paper

8 5/8 x 6 1/2 inches (21.9 x 16.6 cm)

Signed & dated on recto

(BELL 496.06)

10.



**Hans Bellmer**

*À Sade*

Study for "To Sade", 1961

Pencil on paper

10 5/8 x 8 1/4 inches (26.9 x 20.8 cm)

Signed & dated on recto

(BELL 496.08)

11.



**Hans Bellmer**

*À Sade*

Study for "To Sade", 1961

Pencil on paper

8 5/8 x 6 3/8 inches (21.8 x 16.2 cm)

Signed & dated on recto

(BELL 496.04)

12.



**Hans Bellmer**

*Study for "À Sade"*

1960-1961

Pencil on paper

7 3/4 x 5 3/4 inches (19.7 x 14.6 cm) -

image

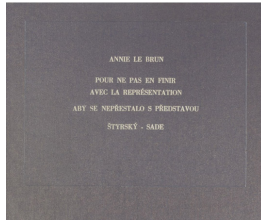
10 5/8 x 8 1/4 inches (27 x 21 cm) -

sheet

Signed on recto / Drawing on verso

(BELL 472)

## SADE: Artists Under the Influence Display Case



### Annie Le Brun

*Pour ne pas en finir avec la  
représentation OR*

*Aby se nepřestalo s představou*

["Not Finishing with the Imagination"],  
Prague, 2002

Book with bolted binding in case  
9 1/8 x 11 1/8 inches (23.2 x 28.3cm) -  
book

10 x 11 7/8 x 1 1/8 inches (25.4 x 30.2  
x 2.9cm) - case

Edition 27 of 30  
(ALEB 1.27)

Location: DISPLAY CASE



### André Breton

*Le Surréalisme au service de la  
révolution, No. 5*

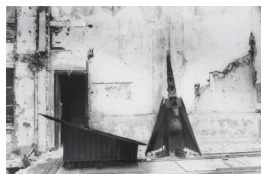
Paris, Éditions des Cahiers Libres, 15  
May 1933

Paperbound volume

11 x 7 5/8 inches (27.9 x 19.4 cm)

(BRET 33005)

Location: DISPLAY CASE



### Gilles Ehrmann

*L'Exécution du testament du marquis de  
Sade*

(performance de Jean Benoît), 1959

Vintage gelatin silver print

10 9/8 x 7 1/8 inches (28.3 x 18.1 cm)

(JBEN 1.1)

Location: DISPLAY CASE



### Gilles Ehrmann

*L'Exécution du testament du marquis de  
Sade*

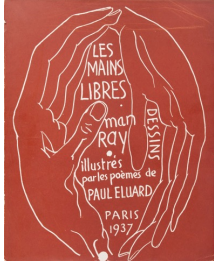
(performance de Jean Benoît), 1959

Vintage gelatin silver print

10 9/8 x 7 1/8 inches (28.3 x 18.1 cm)

(JBEN 1.2)

Location: DISPLAY CASE



**Man Ray**

*Les Mains Libres*

Paris, 1937

Paperbound book

11 x 8 7/8 inches (27.9 x 22.5cm)

(RAY 128)

Location: DISPLAY CASE