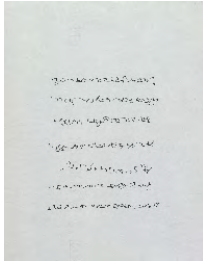


ubu

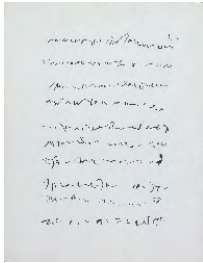
Witnessing Visions: Brion Gysin, Henri Michaux, Judit Reigl, Unica Zürn
On view through February 28, 2014

1.



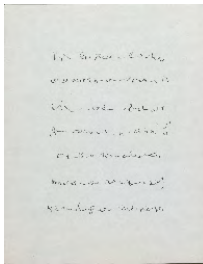
Judit Reigl
Untitled
From *Écriture d'après musique*
["Writing after Music"]
1965
Ink on paper
10 5/8 x 8 1/4 inches (27 x 21 cm)
Signed & dated on verso
(REIG 20)

2.



Judit Reigl
Untitled
From *Écriture d'après musique*
["Writing after Music"]
1965
Ink on paper
10 5/8 x 8 1/4 inches (27 x 21 cm)
Signed & dated on verso
(REIG 15)

3.



Judit Reigl
Untitled
From *Écriture d'après musique*
["Writing after Music"]
1965
Ink on paper
10 5/8 x 8 1/4 inches (27 x 21 cm)
Signed & dated on verso
(REIG 19)

4.



Brion Gysin

Untitled
1963
Ink on paper
8 3/4 x 7 inches (22.2 x 17.8 cm)
Initialed & dated on recto
(GYSI 9)

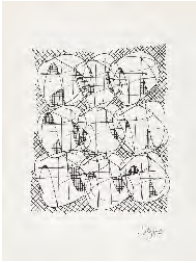
5.



Brion Gysin

Untitled
1963
Ink on paper
8 3/4 x 7 inches (22.2 x 17.8 cm)
Initialed & dated on recto
(GYSI 10)

6.



Brion Gysin

Untitled
1963
Ink on paper
8 3/4 x 7 inches (22.2 x 17.8 cm)
Initialed & dated on recto
(GYSI 8)

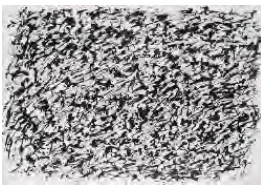
7.



Brion Gysin

Untitled
1963
Ink on paper
8 3/4 x 7 inches (22.2 x 17.8 cm)
Initialed & dated on recto
(GYSI 7)

8.



Henri Michaux

Untitled
1974
Ink on paper
28 1/4 x 40 inches (71.8 x 101.6 cm)
37 5/8 x 49 7/8 (95.5 x 126.3)
(MICX 5)

9.



Judit Reigl
Untitled
Precursor to *Outburst* series, 1955-57
1954
Ink on paper
8 1/2 x 11 inches (21.6 x 27.9 cm)
Signed & dated on recto
(REIG 61)

10.



Judit Reigl
Untitled
Precursor to *Outburst* series, 1955-57
1954
Ink on paper
8 5/8 x 11 inches (21.9 x 27.9 cm)
Signed & dated on recto
(REIG 54)

11.



Judit Reigl
Untitled
Precursor to *Outburst* series, 1955-57
1954
Ink on paper
8 3/4 x 11 inches (22.2 x 27.9 cm)
Signed & dated on recto
(REIG 55)

12.



Judit Reigl
Untitled
2010
Ink on paper
28 1/2 x 59 3/4 inches (72.4 x 151.8 cm)
(REIG 32)

13.



Unica Zürn
Untitled
ca. 1963
Ink on paper
19 3/4 x 25 5/8 inches (50.2 x 65.1 cm)
Signed on recto
(ZURN 96)

14.



Judit Reigl
Untitled
2010
Ink on paper
29 1/2 x 33 1/2 inches (74.9 x 85.1 cm)
(REIG 36)

15.



Unica Zürn

Untitled
1966
Ink on paper
15 x 9 7/8 inches (38.1 x 25.1 cm)
Signed & dated on recto
Numbered (stamped) "52" on verso
(ZURN 142)

16.



Henri Michaux

Dessin mescalinien
["Mescaline Drawing"]
1956
Ink on paper
7 5/8 x 7 inches (19.4 x 17.8 cm)
Initialed & annotated on recto
(MICX 2)

17.



Unica Zürn

Phantasiegebilde
["Educated Imagination"]
1967
Ink on paper
10 5/8 x 9 7/8 inches (27 x 25.1 cm)
Signed & dated on recto
Drawing on verso
(ZURN 136)

18.



Henri Michaux

Untitled
Post-mescaline drawing
1969
Pastel on paper
12 5/8 x 9 3/8 inches (32.1 x 23.8 cm)
Initialed on recto
(MICX 6)

19.



Henri Michaux

Untitled
Post-mescaline drawing
1969
Pastel on paper
12 5/8 x 9 1/4 inches (32.1 x 23.5 cm)
Initialed on recto
(MICX 7)

20.

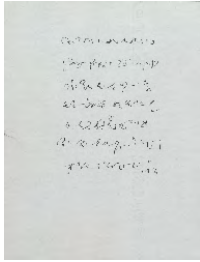


Unica Zürn

*Guten Abend mein Ungleuck wie geht es Dir?
 Ich kegle in Dir um das unentwegte Beugen*
 ["Good Evening Bad luck, How Are You?"]
 ["I control In You the Constant Bending"]
 ca. 1958

Ink on paper (torn anagram drawing
 reassembled by Hans Bellmer)
 11 1/8 x 7 1/2 inches (28.3 x 19.1 cm) -
 image
 13 5/8 x 10 1/2 inches (34.6 x 26.7 cm) -
 mount
 Signed on recto
 (ZURN 137)

21.

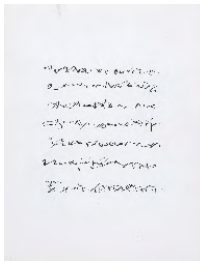


Judit Reigl

Untitled
 From *Écriture d'après musique*
 ["Writing after Music"]
 1965

Ink on paper
 10 5/8 x 8 1/4 inches (27 x 21 cm)
 Signed & dated on verso
 (REIG 16)

22.

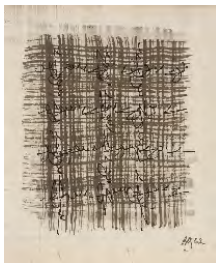


Judit Reigl

Untitled
 From *Écriture d'après musique*
 ["Writing after Music"]
 1966

Ink on paper
 10 5/8 x 8 1/4 inches (27 x 21 cm)
 Signed & dated on verso
 (REIG 5)

23.



Brion Gysin

Untitled
 1962
 Watercolor & ink on paper
 9 5/8 x 8 inches (24.4 x 20.3 cm)
 Initialed & dated on recto
 (GYSI 6)

24.



Brion Gysin

Untitled
 1962
 Watercolor & ink on paper
 9 5/8 x 8 1/8 inches (24.4 x 20.6 cm)
 Initialed & dated on recto
 (GYSI 5)

25..



Brion Gysin

Untitled

1959

Ink on paper

25 7/8 x 18 7/8 inches (65.7 x 47.9 cm)

31 3/4 x 24 1/4 inches (80.5 x 61.5 cm)

Signed & dated on recto

Signed & annotated on verso

(GYSI 2)

26.



Henri Michaux

Untitled

1946-1948

Ink, watercolor & gouache on paper

10 x 12 7/8 inches (25.4 x 32.7 cm)

Initialed on recto

(MICX 1)

27.



Henri Michaux

Untitled

1957-1958

Watercolor on Arches paper

19 5/8 x 25 1/2 inches (49.8 x 64.8 cm)

29 7/8 x 36 1/4 x 1 5/8 inches (76 x 92 x 4.5 cm)

Initialed on recto

(MICX 3)

28.



Unica Zürn

Untitled

1960s

Ink, gouache & watercolor on paper

19 1/2 x 25 1/2 inches (49.5 x 64.8 cm)

Signed on recto

(ZURN 135)

29.



Henri Michaux

Untitled

1944

Pencil rubbing on paper (frottage)

11 5/8 x 16 3/4 inches (29.5 x 42.5 cm)

(MICX 9)

30.



Henri Michaux

Untitled

1944

Pencil rubbing on paper (frottage)

17 7/8 x 12 inches (45.4 x 30.5 cm) - by sight

(MICX 8)

31.



Brion Gysin

Untitled

1941

Decalcomania (ink wash) & watercolor on paper

13 7/8 x 10 7/8 inches (35.2 x 27.6 cm)

Signed twice & dated on recto

(GYSI 1)

32.



Judit Reigl

Untitled

2010

Ink on paper

29 1/2 x 53 3/4 inches (74.9 x 136.5 cm)

(REIG 33)

33.



Henri Michaux

Untitled

1961-62

Ink on paper

29 x 40 7/8 inches (73.7 x 103.8 cm)

37 x 49 x 1 3/8 inches (94.2 x 124.7 x 3.5 cm)

Initialed on recto

(MICX 4)

34.



Unica Zürn

Untitled

Île de Ré, 1963

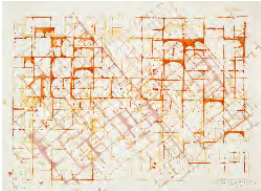
Ink & gouache on paper

19 3/4 x 25 3/4 inches (50.2 x 65.4 cm)

Signed & dated on recto

(ZURN 98)

35.



Brion Gysin

Plan N° 55

1961

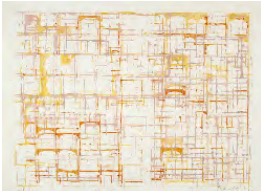
Ink & gouache on paper

13 5/8 x 18 7/8 inches (34.6 x 47.9 cm)

Signed, titled & dated on recto

(GYSI 4)

36.



Brion Gysin

Plan N° 54

1961

Ink & gouache on paper

13 1/2 x 18 5/8 inches (34.3 x 47.3 cm)

Signed, titled & dated on recto

(GYSI 3)

37.



Unica Zürn

Untitled

1959

Ink & gouache on paper

17 3/4 x 24 3/8 inches (45.1 x 61.9 cm)

Signed & dated on recto

Drawing on verso

(ZURN 100)

38.



Unica Zürn

Untitled

Île de Réi [sic], 1963

Collage & gouache on paper

25 1/4 x 19 5/8 inches (64 x 50 cm)

Signed & dated on recto

(ZURN 133)

39.



Brion Gysin

Ich spüre wie die Bullen das Haus

1960

Ink & gouache on paper

29 7/8 x 21 3/4 inches (76 x 55 cm)

Signed, initialed & dated on recto

(GYSI 14)